

**Saltoun Road, London, SW2****£550,000**

3 bedroom flat for sale

## Property Details

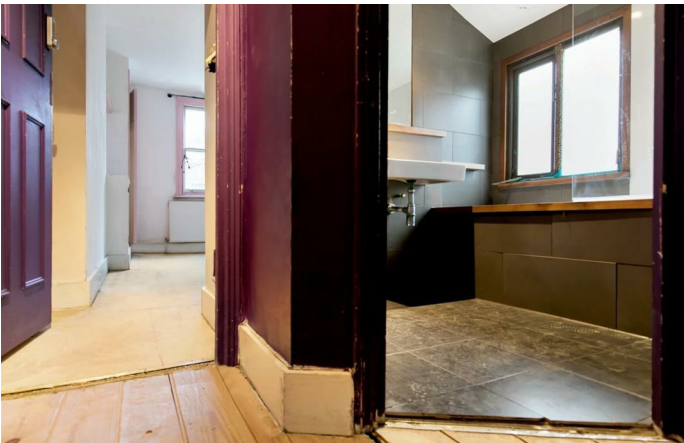
A spacious three double bedroom, split level Victorian conversion, requiring complete renovation throughout. The property is situated in the heart of Brixton, a couple of minute's walk from Brixton tube station. The property comprises three double bedrooms on different floors, a bathroom and an open plan kitchen and reception which spans the width of the building and is flooded with natural light through the sash windows. Offering over 870 square feet of living space, the layout is extremely versatile and could be altered to suit a wide range of potential purchasers' needs. Chain free.

## Features

- Chain free
- Victorian
- Split-level
- Development potential
- Requires refurbishment
- Close to transport links
- Close to Brockwell Park

Council tax band A      EPC rating (null)





Saltoun Road, London, SW2

**K**

3 Bed flat

Approx internal area:

**876 sqft 81 sqm**

Excluding eaves storage

While we do try our very best, floor plans are produced as a guide only and we take no responsibility for the precise accuracy with which any property is represented

## Saltoun Road



Saltoun Road, London, SW2

