



Torrens Road, Brixton, SW2

4 bedroom house - terraced for sale

£1,150,000

Freehold

Property Details

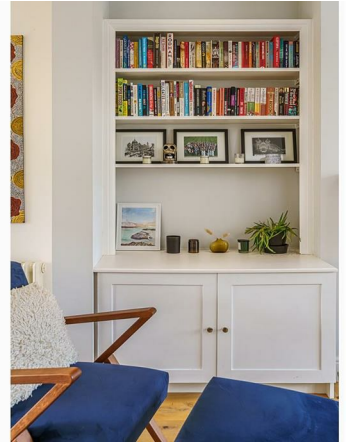
An end of terrace Edwardian home boasting original period features and contemporary design with four bedrooms, two bathrooms and substantial living space. Torrens Road is a sought-after square with low traffic flow in the catchment area for Sudbourne and Corpus Christi. The dual aspect reception and dining room is packed full of character with plenty of room for a spacious lounge plus a large dining table. In the fully-integrated kitchen, striking blue cabinetry contrasts with white work surfaces, designed to a sociable layout. Sliding glass doors lead off the dining area into the L-shaped garden, with patio area, decking, mature planted borders and palm trees, plus side access for ease of storage in the shed. On the first floor, sit three of the four bedrooms: the slightly smaller bedroom has a multitude of potential uses for the new owners. The two further bedrooms on this floor are generous doubles, one with a sweeping bay window and the other with garden views. Completing this floor is a modern family bathroom. Up a further flight of stairs is the principal bedroom with a large picture frame window, bespoke storage into the eaves and a further striking bathroom across the hall.

Council tax band E

EPC rating C (69)

Features

- Four bedrooms
- Two bathrooms
- End of terrace Edwardian house
- Large L-shaped garden
- Beautifully presented throughout
- Sudbourne and Corpus Christi School catchment area
- Central Brixton a seven-minute walk
- Brockwell Park a ten-minute stroll
- Start of the Victoria Line plus access to Northern Line, ThamesLink and Overground
- Freehold



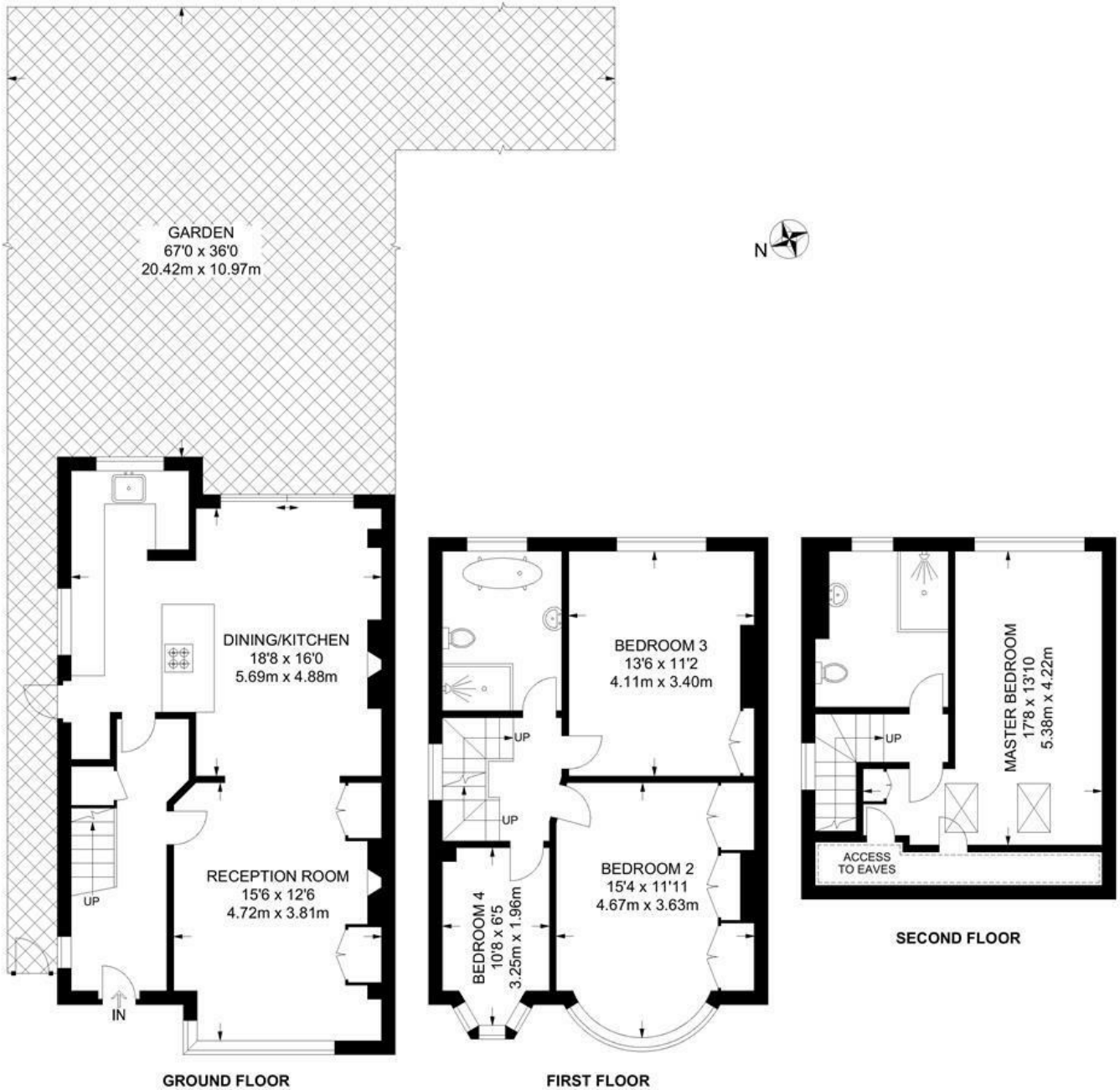


Torrens Road, Brixton, SW2

Torrens Road, SW2

4 Bedroom House

APPROXIMATE TOTAL INTERNAL AREA: 1455 SQ FT / 135.2 SQ M



While we try our very best, floor plans are produced as a guide only and we take no responsibility for the precise accuracy with which any property is represented.

Torrens Road, Brixton, SW2

