



Railton Road, Herne Hill, SE24

2 bedroom flat to let

£505 Per Week

Furnished

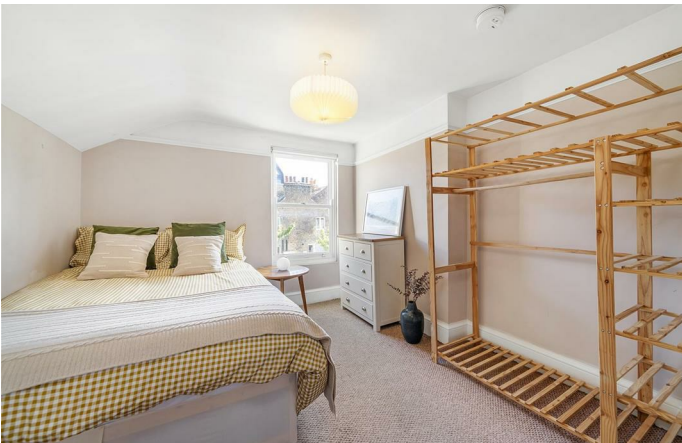
Property Details

****VIDEO TOUR AVAILABLE UPON REQUEST**** Keating Estates are proud to offer this lovely two bedroom split level flat, located between Brixton and Herne Hill stations both with great direct links into the city. The flat is split over two levels and comprises a large separate reception room which has a stunning feature fireplace, a separate kitchen fitted with all integrated appliances two large double bedrooms and a modern sleek family size bathroom. The flat is light and airy throughout, has neutral décor, and includes great features. As locations go, it is fantastic. A short walk to Brixton with The Ritz, Brixton Village and an array of shops/supermarkets, as well as close to Herne Hill and it's fantastic artisan farmer's market. For transport, Railton Road is minutes away from Brixton's Victoria Line tube station as well as Herne Hill's over ground and also offers a number of Cyclehoop bicycle storage units. An entrance to Brockwell Park and the Lido is only a stone's throw away. Brockwell Park is lauded as London's best outdoor space by locals.

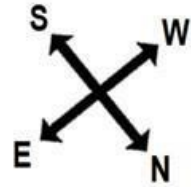
Features

- Split-level
- Light and airy
- Close to Brockwell Park
- 2 Bedrooms
- 1 Reception
- 1 Bathroom

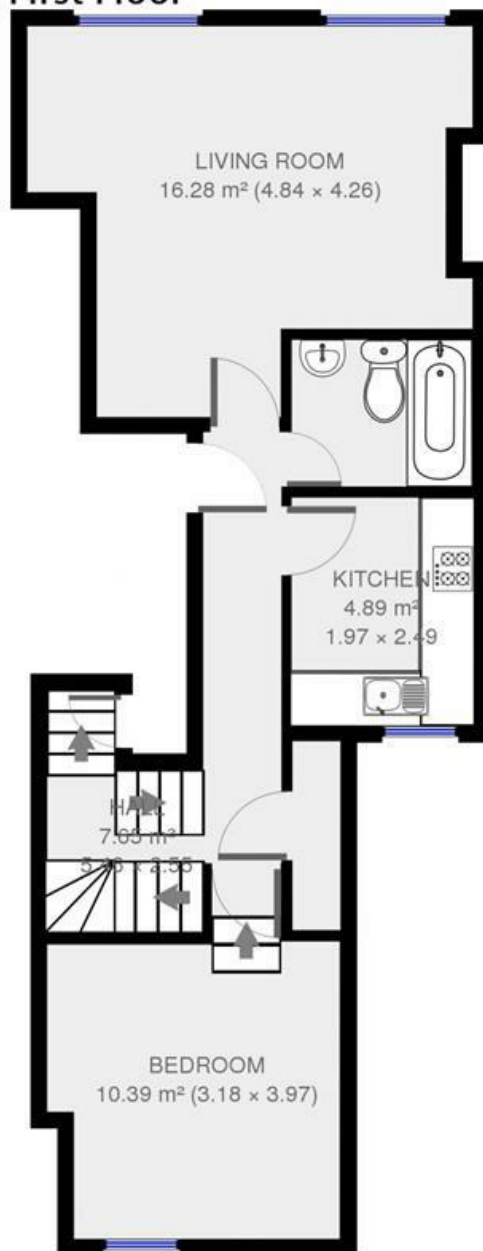
Council tax band C EPC rating C (74)



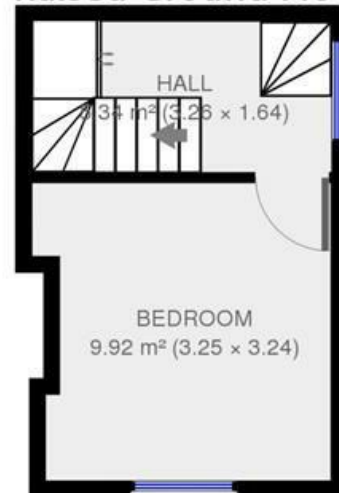
Railton Road



First Floor



Raised Ground Floor



2 bed flat.

Approx internal area:

sqft 58 sqm

While we do try our very best, floor plans are produced as a guide only and we take no responsibility for the precise accuracy with which any property is represented

Railton Road, Herne Hill, SE24

