



**Ratray Road, SW2**

3 bedroom flat to let

**£600 Per Week**

Furnished

## Property Details

A modern, homely 3 bedroom split-level flat, situated just under a 7 minute walk from Brixton station.

## Features

- 3 double bedrooms
- Under a 7 minute walk to Brixton station
- Under a 7 minute walk to Brixton high street
- Split level
- Open plan
- Light and airy

Council tax band C    EPC rating D (56)







# Ratray Road

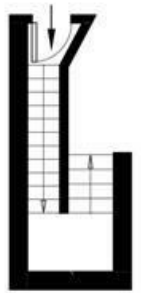
## 3 Bedroom Flat

Approx internal area:

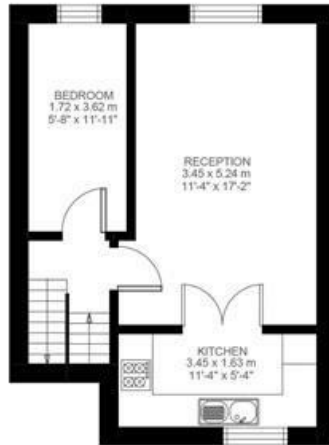
(EXCLUDING EAVES STORAGE)  
 EAVES STORAGE 10.23 SQ.M / 110 SQ.FT  
 INCLUSIVE TOTAL AREA 85.23 SQ.M / 917 SQ.FT

**809 sqft 75 sqm**

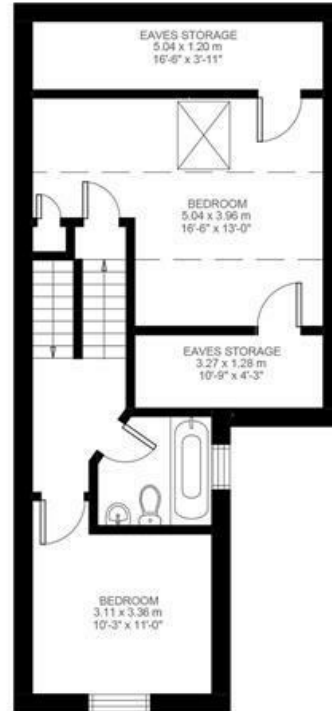
While we do try our very best, floor plans are produced as a guide only and we take no responsibility for the precise accuracy with which any property is represented



Ground Floor



First Floor



Second Floor





Ratray Road, SW2

