



Blore Close, Clapham, SW8

£425,000

3 bedroom flat - purpose built for sale

Property Details

A light and airy three double bedroom flat split over the first and second floors of a well-maintained, purpose-built block. The location is perfect, a short walk from the amenities within Clapham Old Town, Stockwell and Larkhall Park is across the road. Clapham High Street with its multitude of restaurants, bars and coffee shops are all within reach and the green open spaces of Clapham Common and Battersea Park are also close-by. There are excellent transport links with Stockwell, Wandsworth Road, Clapham North and Clapham High Street stations are all a less than a ten-minute walk. Chain free.

Features

- Three double bedrooms
- Purpose-build flat
- Chain-free
- Bright and airy throughout
- Split-level
- Balcony
- Over 900 square feet

Council tax band C EPC rating C (73)



K

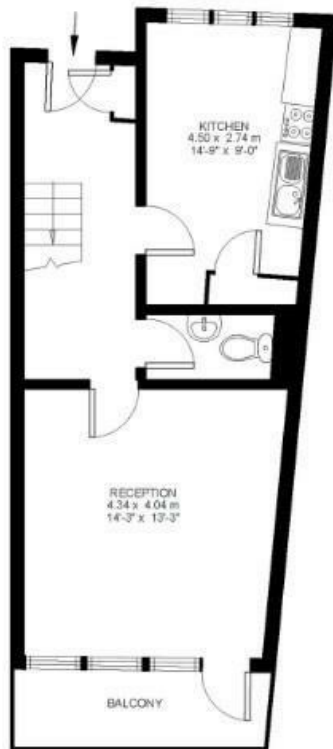
Blore Close

3 Bed flat

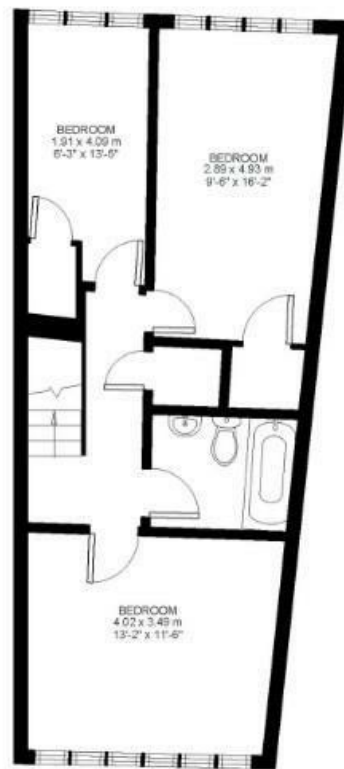
Approx internal area:

926 sqft 86 sqm

While we do try our very best, floor plans are produced as a guide only and we take no responsibility for the precise accuracy with which any property is represented



First Floor



Second Floor



Blore Close, Clapham, SW8

