

**Elms Road, SW4**

2 bedroom flat to let

**£553 Per Week**

Furnished

## Property Details

Keating Estates are proud to present to market an immaculately presented two double bedroom flat on one of Clapham's most coveted residential roads on Elms Road moments from Clapham South Station and Clapham Common.

The open plan reception set at the front of the property is the perfect spot in which to relax and unwind, dine and entertain, the kitchen is integrated fitted with mod cons offers plenty of storage options and surface space. Both bedrooms are generous, the principal room is particularly spacious and while the second is spacious it is also versatile and can be perfect as a guest room or home office. Living here you will have access to a shared garden which is ready to be enjoyed the moment the weather permits. The flat also comes with bike storage.

Clapham Common South Side is a highly desirable residential area with handsome and imposing Victorian terraced houses overlooking Clapham Common. The flat is situated within touching distance of Clapham South underground station and plenty of local amenities. Clapham High Street is also on offer in the other direction, in a matter of minutes. The wonders of Abbeville Village are easily reachable, offering boutique cafes and shops. Brixton and Balham are both also available within minutes, providing a further choice of nightlife and amenities.

**Council tax band D**      **EPC rating E (52)**

## Features

- Two bed
- Spacious throughout
- Shared Garden
- Close to Clapham South Station
- Close to Clapham Common
- Bike Storage

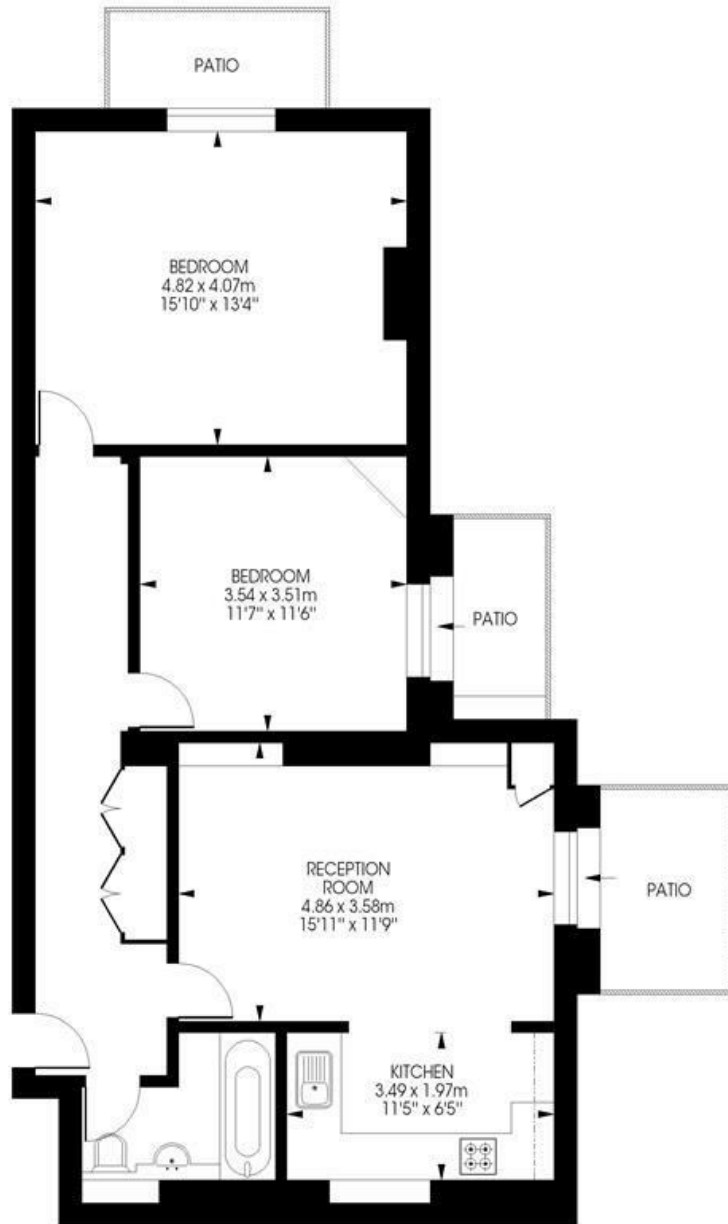




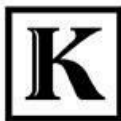
Elms Road, SW4

Elms Road, SW4  
2 bedroom flat

Approximate internal area: **827 sqft / 76.83 sqm**



**Lower Ground Floor**



While we try our very best, floor plans are produced as a guide only and we take no responsibility for the precise accuracy with which any property is represented.

Elms Road, SW4

