



Brailsford Road, Brixton, SW2

2 bedroom flat - conversion for sale

£535,000

Share of Freehold

Property Details

A two double bedroom apartment, overlooking one of London's most popular parks. Forming the heart of this beautiful home is a spacious open plan reception room, a bright and airy space ideal for lounging in front of the cosy wood burner. The sleek, fully integrated kitchen offers ample storage space and large work surface, a trendy environment in which to both cook and dine. To the rear of the property are both bedrooms, each enjoying leafy views over Brockwell Park. The principal double bedroom boasts a feature fireplace, built in wardrobes and an alcove desk space next to the sash window. Also a comfortable double the second bedroom is being utilised as a home office by the current vendors, this versatile room offers built in storage and can easily be repurposed to suit the needs of the purchaser. A neutral family bathroom completes this lovely home, equipped with rain head shower and bath tub. The property further comes with a share of the freehold and a share of the basement, ideal for storage.

Features

- Two double bedrooms
- Victorian Conversion
- Views over Brockwell Park
- Highly sought-after residential road
- Wood burning stove
- 10 minute walk to Brixton
- 15 minute walk to Herne Hill
- Entrance to Brockwell Park on the road
- Share of freehold

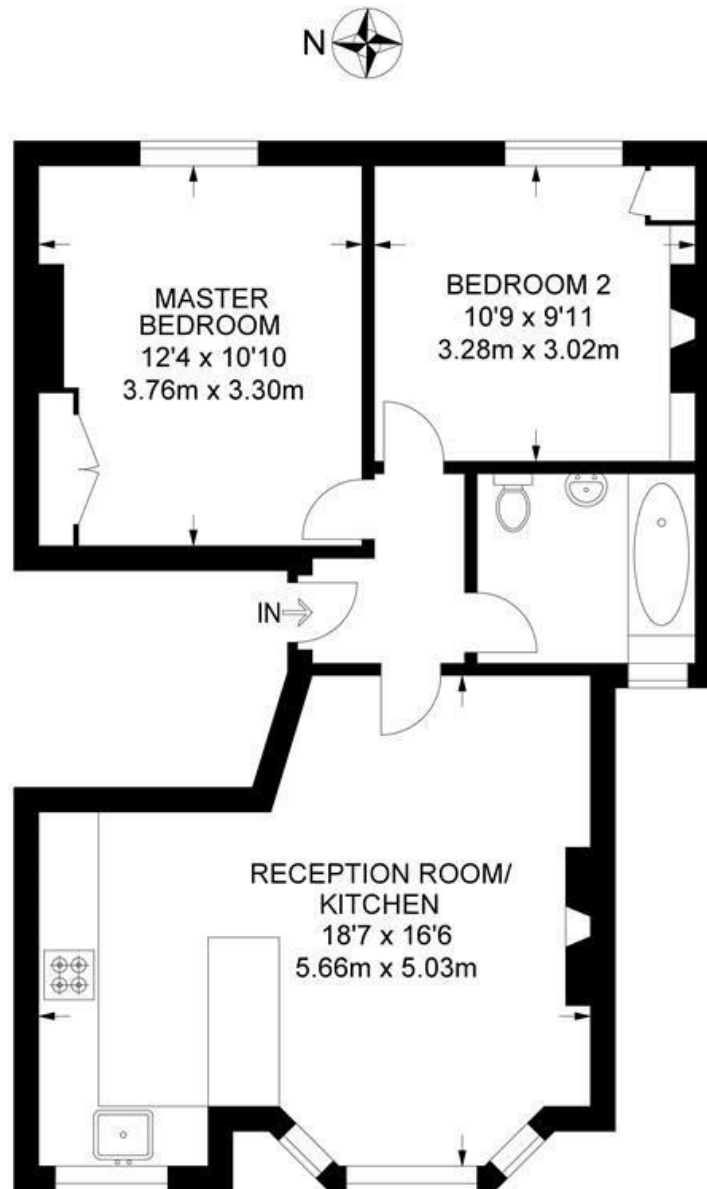
Council tax band C EPC rating D (67)



Brailsford Road, Brixton, SW2

Brailsford Road, SW2
2 Bedroom Flat

APPROXIMATE TOTAL INTERNAL AREA: **586 SQ FT / 54.4 SQ M**



FIRST FLOOR



While we try our very best, floor plans are produced as a guide only and we take no responsibility for the precise accuracy with which any property is represented.

Brailsford Road, Brixton, SW2

