



Haycroft Road, Brixton, SW2

2 bedroom flat to let

£485 Per Week

Part furnished

Property Details

A lovely two double bedroom split level flat sandwiched between both Clapham and Brixton. The flat comprises a spacious, elegant open-plan kitchen reception room, the kitchen is fitted with all integrated appliances and a breakfast bar. The reception area is spacious and bright, neutrally decorated and has space for a dining area. There is also two spacious double bedrooms and a beautiful modern family size bathroom. The property is an eight to ten minute walk to the green open spaces of Brockwell Park and around the same distance to Windrush Square.

Features

Council tax band D EPC rating D (64)





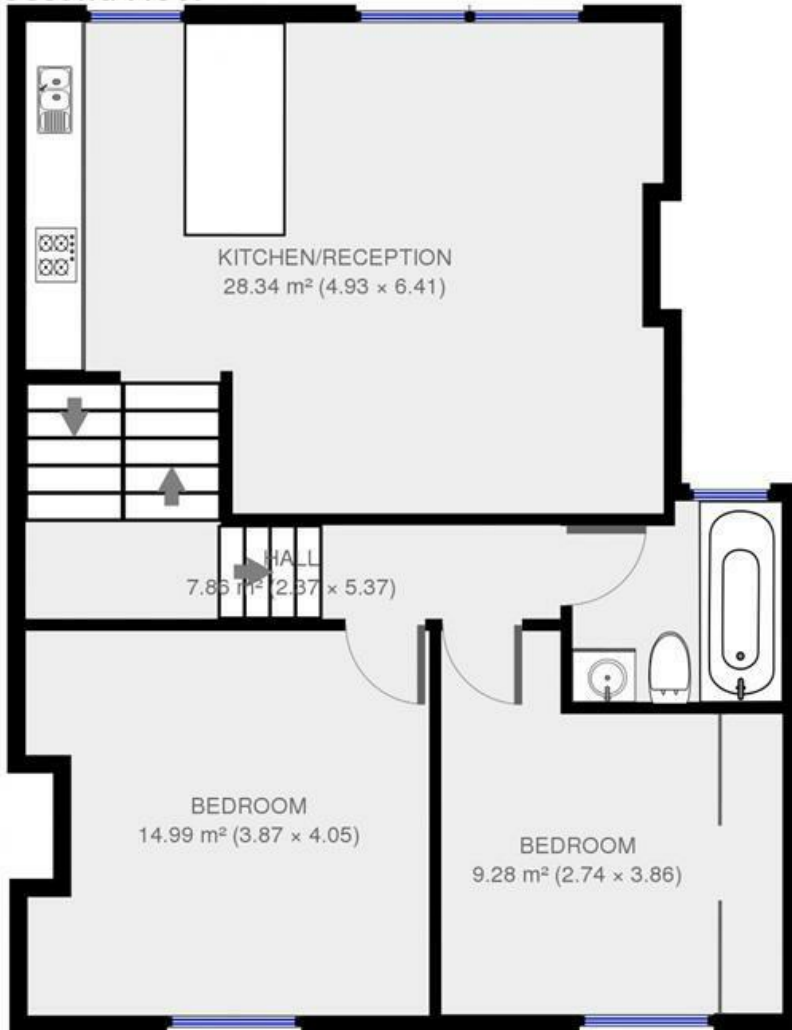
2 bed flat.

Approx internal area:

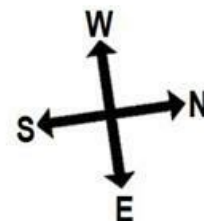
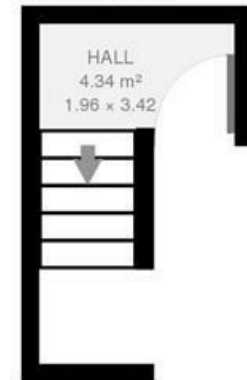
786 sqft 73 sqm

While we do try our very best, floor plans are produced as a guide only and we take no responsibility for the precise accuracy with which any property is represented

Second Floor



First Floor



Haycroftr Roac

Haycroft Road, Brixton, SW2

