

## Branksome Road, Brixton, SW2

1 bedroom flat - conversion for sale

£325,000

Leasehold

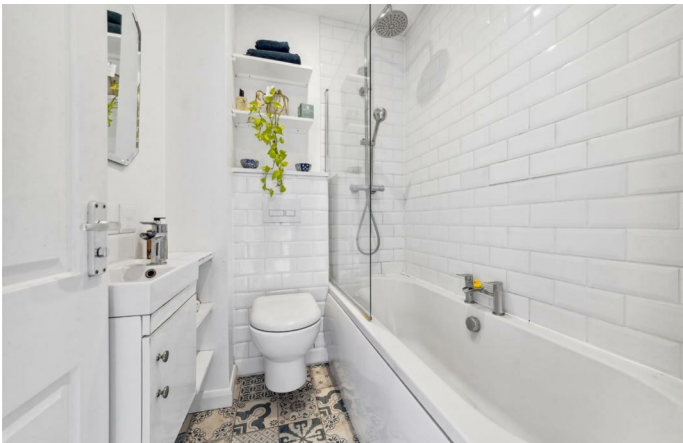
### Property Details

A homely one double bedroom apartment within a Victorian terrace on, an attractive residential street with local amenities and eateries on the doorstep. With a considered layout, maximising the space on offer this characterful home has been lovingly cared for by the vendors, who have refurbished the kitchen and bathroom, replastered and redecorated during their ownership. The open-plan reception boasts evening sunlight through large sash windows, adding to the charm. Unwind with a good book or cook up a tasty treat to enjoy at the table with a loved one. The kitchen adds a rustic yet contemporary feel, providing practicality, spanning one wall with a gas hob and ample storage. Peacefully nestled to the rear with leafy views, the bedroom is a double with a cosy ambience and morning sun. The bathroom is neutral and contemporary, with storage plus a bathtub with overhead shower.

Council tax band B    EPC rating D (62)

### Features

- One double bedroom
- Victorian conversion
- Bright and airy
- Well-presented throughout
- Local amenities and eateries on the doorstep
- Equidistant between Clapham and Brixton
- Northern and Victoria Lines, Overground and Trains
- Chain-free

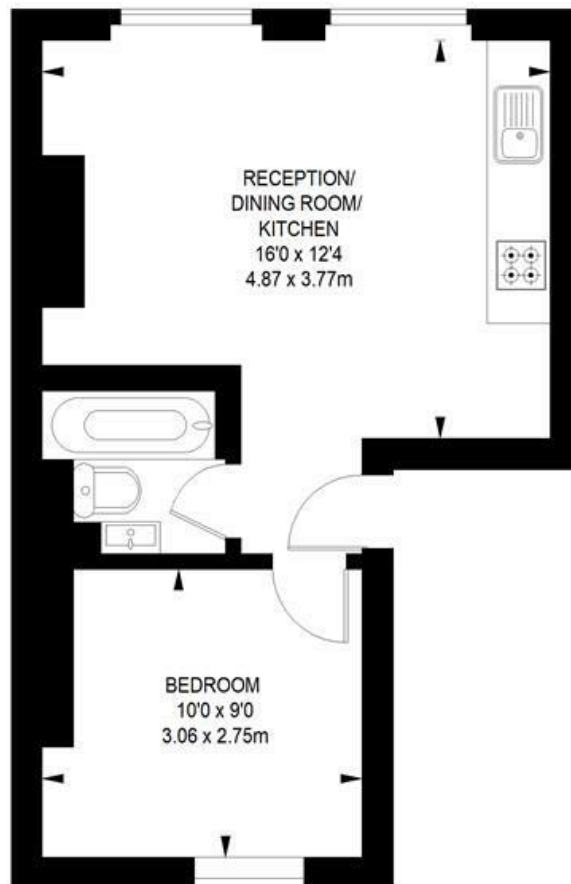


Branksome Road, Brixton, SW2

**Branksome Road, SW2**

**1 bedroom flat**

APPROXIMATE GROSS INTERNAL AREA : **334 SQ FT / 31.03 SQ M**



**FIRST FLOOR**



While we try our very best, floor plans are produced as a guide only and we take no responsibility for the precise accuracy with which any property is represented.

Branksome Road, Brixton, SW2

