



Milkwood Road, Herne Hill, SE24

1 bedroom flat to let

£403 Per Week

Furnished

Property Details

This wonderful one bedroom garden flat is located just a stones throw away from Herne Hill over ground station taking you only 12 minutes into Victoria and a 16 minute walk to Brixton. The flat is bright and airy throughout with a spacious open plan modern kitchen and reception area, a large double bedroom and a generous size bathroom. Living here you'll have the benefit of enjoying some private time outside in your private garden perfect for entertaining guests in the summer and even at home workouts. This property is ideal for a couple or a solo professional sharer.

Features

- Private garden
- Close to transport links
- Close to Brockwell Park
- Moments away from Herne Hill Overground
- Open plan kitchen/reception
- One bedroom
- Around an 18 minute walk to Brixton High Street

Council tax band C EPC rating D (66)



Milkwood Road, Herne Hill, SE24

Milkwood Road

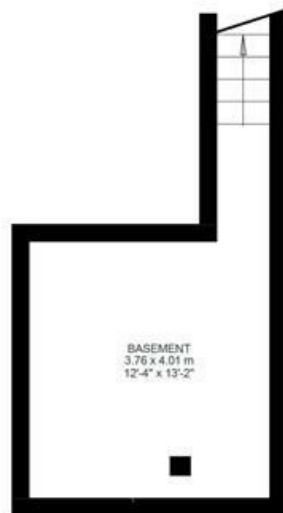
K

1 Bed Flat

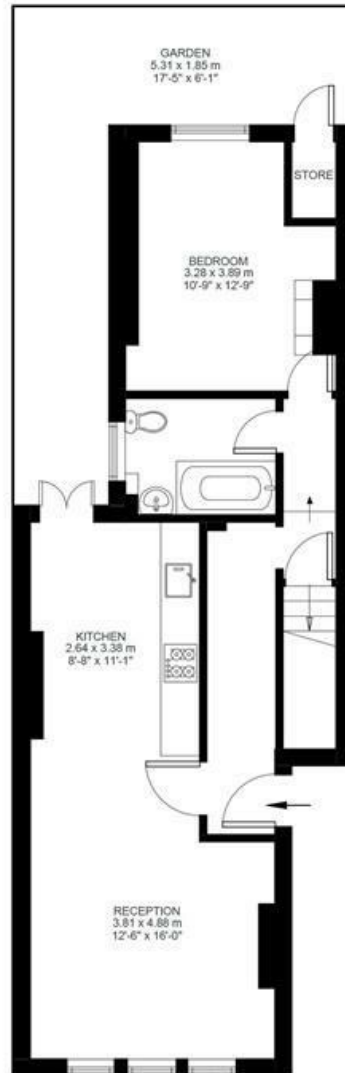
Approx internal area:

786 sqft 73 sqm

While we do try our very best, floor plans are produced as a guide only and we take no responsibility for the precise accuracy with which any property is represented



Lower Ground Floor



Ground Floor



Milkwood Road, Herne Hill, SE24

