

**Gresham Road, Brixton, SW9**

2 bedroom flat - conversion for sale

**£525,000**

Share of Freehold

## Property Details

An attractive and spacious two double bedroom split-level flat, arranged over the top two floors of a handsome Victorian terrace. This property exudes a house-like ambiance, with a double-height entrance lobby. It effortlessly blends contemporary styling with period charm, highlighted by exposed brickwork, original wood floors, lofty ceilings, and expansive windows, feeling bright, spacious and wonderfully private. The heart of the home is the large reception, with space for a dining table whilst still providing a decent living space. Adjacent, sits a contemporary integrated kitchen, newly fitted last year with appealing cabinetry and trendy leather handles. Subject to the necessary permissions, there is the potential to combine the two into one large open plan living if preferred. Ideal for sharers, both bedrooms are doubles, set to differing levels of the property, the principal on the top floor peacefully displaying views over the surrounding area, plus access to the eaves storage. The second bedroom is downstairs, nestled quietly to the rear with fitted wardrobes. The modern bathroom is stylishly finished and boasts a large walk-in rain shower.

Council tax band B    EPC rating C (72)

## Features

- Two double bedrooms
- Stylish split level flat
- Victorian conversion
- Bright and airy throughout
- Over 900 square feet
- Local amenities of Brixton Village and Coldharbour Lane
- Victoria Line a seven-minute walk
- Brixton Overground a five-minute stroll
- Chain-free

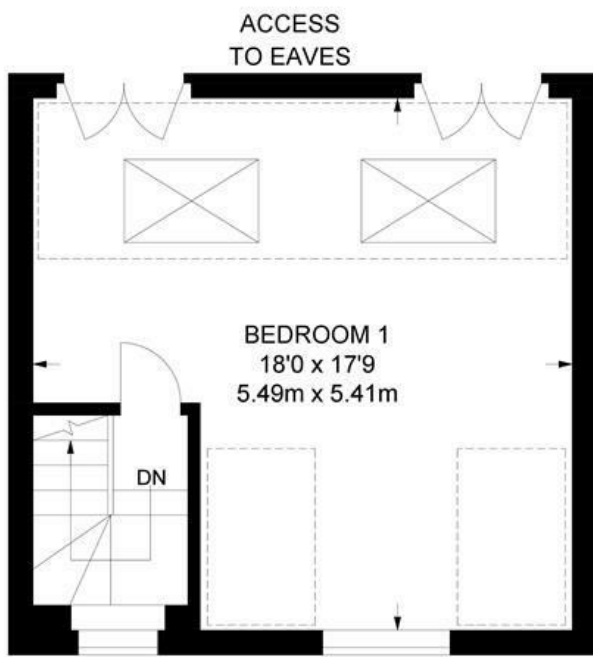




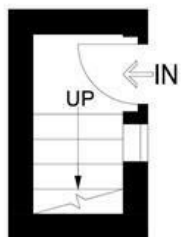
Gresham Road, Brixton, SW9

**Gresham Road, SW9**  
**2 Bedroom Flat**

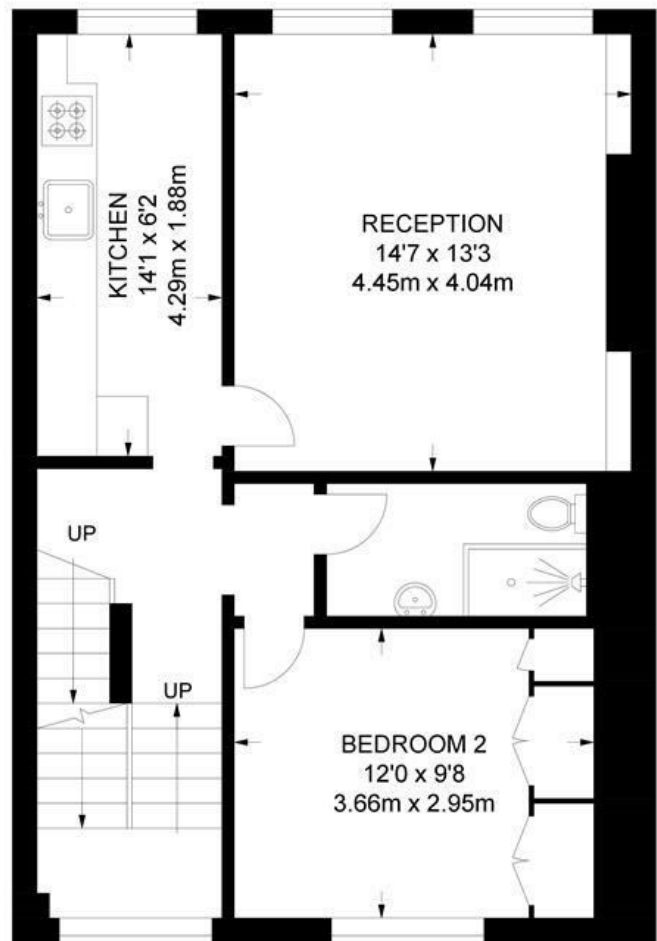
APPROXIMATE GROSS INTERNAL AREA: **924 SQ FT / 85.8 SQ M**



THIRD FLOOR



FIRST FLOOR



SECOND FLOOR



While we try our very best, floor plans are produced as a guide only and we take no responsibility for the precise accuracy with which any property is represented.



Gresham Road, Brixton, SW9

