

**Sudbourne Road, Brixton, SW2**

4 bedroom house to let

**£950 Per Week**

Part furnished

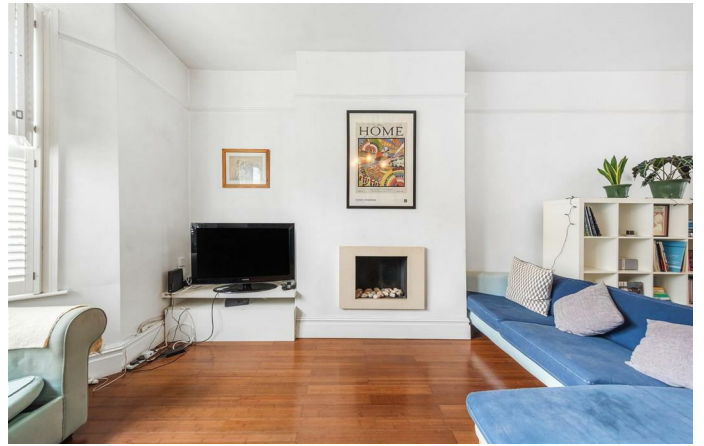
## Property Details

A stunning four double bedroom terraced house located a stone's throw away from the culinary mecca of Brixton. The house comes complete with a dual aspect lounge, a large private garden perfect for entertaining friends throughout the summer months, a spacious separate kitchen, four double bedrooms and a family size bathroom shared by all bedrooms. The property is a nine-minute walk to the center of Brixton where you can find the delights of Brixton Village, The Ritzy cinema, The Duke of Edinburgh pub, and much more. You also have the tube station within the same walking distance giving you access to the first stop on the Victoria line. In the opposite direction a further ten to fifteen-minute walk you have Clapham. With its the multitude of restaurants and bars and excellent transport links with two Northern Line underground stations; Clapham Common and Clapham North tube stations.

**Council tax band F**      **EPC rating D (61)**

## Features

- Terraced House
- 4 Bedrooms
- 2 Receptions
- 1 Bathroom
- Private Garden
- Bright And Airy Throughout
- Sought After Location
- Central Location



Sudbourne Road, Brixton, SW2

## Sudbourne Road

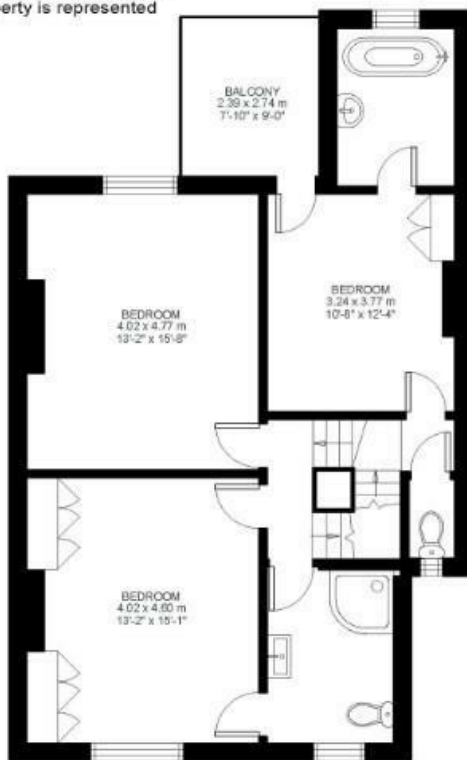
# K

4 Bed house

Approx internal area:

**1830 sqft 170 sqm**

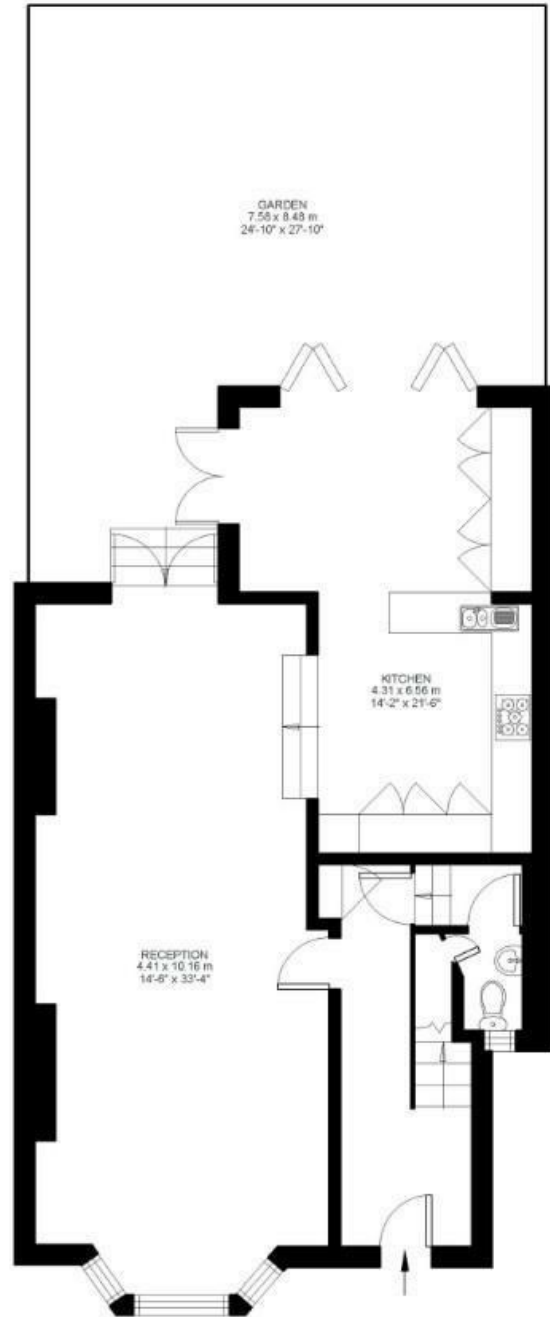
While we do try our very best, floor plans are produced as a guide only and we take no responsibility for the precise accuracy with which any property is represented



First Floor



Second Half Floor



Ground Floor



Sudbourne Road, Brixton, SW2

