

Stockwell Park Walk, Stockwell, SW9

2 bedroom flat - purpose built for sale

£400,000

Leasehold

Property Details

A characterful two double bedroom apartment with a shared garden, set within an Art Deco gated community. Stylish and well-proportioned, this fantastic apartment benefits from a bright and private setting on the second floor. High ceilings, large windows and beautiful parquet flooring add to the appeal. The reception room is bright and comfortable with space to dine, unwind and entertain, bathed in natural light from a sprawling window. The separate kitchen is stylish with white cabinetry topped with wooden worktops and floor to ceiling storage. A patio door opens out to the walkway, whilst the main entrance is to the opposing side of the flat, into the spacious hallway. Both bedrooms are doubles, set to opposing sides of the property for privacy. The principal is generous with built-in wardrobes, the second still a rentable double is currently a guest room and office. A contemporary bathroom neighbours a WC, perfect for sharers. The cherry on the cake is the delightful shared garden, a pretty suntrap, sheltered within the gates of the development. Subject to availability, there is the possibility to rent a parking space or garage.

Features

- Two double bedrooms
- Attractive shared garden
- Art Deco gated building
- Stunning character throughout
- Separate kitchen and reception
- Bright and airy
- Local amenities of central Brixton
- Victoria line in five minutes
- Walking distance to Northern line & Clapham High Street

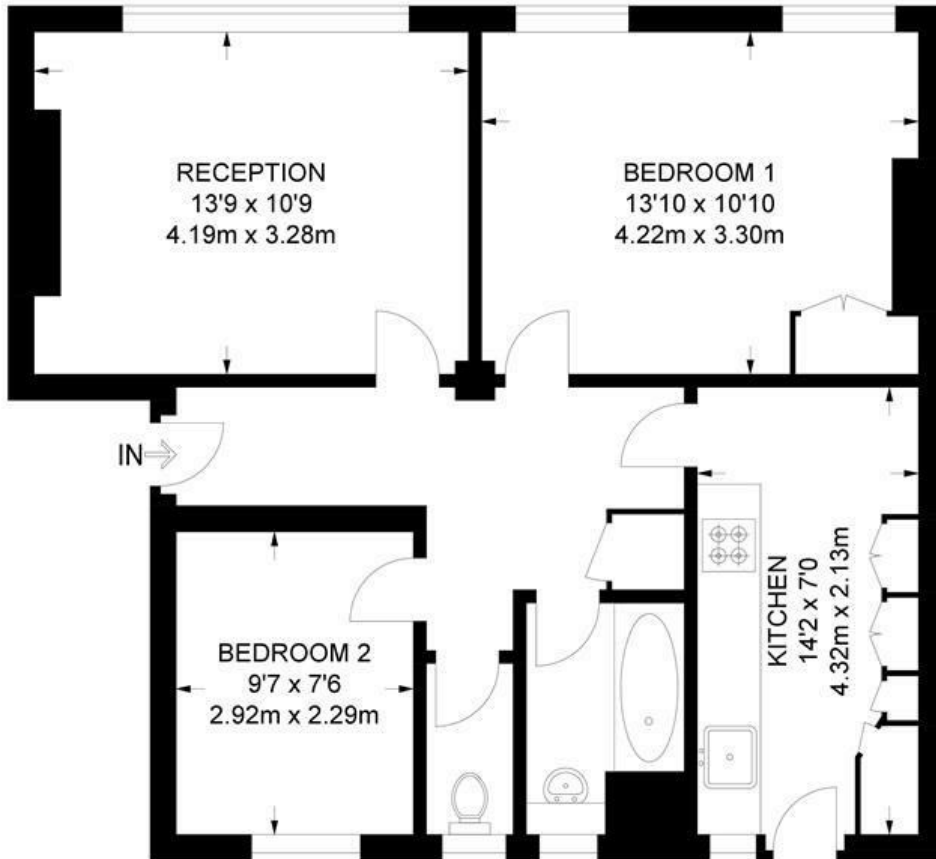
Council tax band B EPC rating C (72)



Stockwell Park Walk, Stockwell, SW9

Stockwell Park Walk, SW9
2 Bedroom Flat

APPROXIMATE GROSS INTERNAL AREA: **646 SQ FT / 60 SQ M**



SECOND FLOOR



While we try our very best, floor plans are produced as a guide only and we take no responsibility for the precise accuracy with which any property is represented.

Stockwell Park Walk, Stockwell, SW9

