



Leander Road, Brixton, SW2

3 bedroom flat to let

£692 Per Week

Furnished

Property Details

A stunning split level 3 bed flat, located on one of Brixton's most popular residential roads. Situated in the midpoint between Brixton station and Brockwell Park on Leander Road, this flat is perfect for anyone looking to be close to the action, and cut down their commute, with the first stop on the Victoria line at Brixton station only a fifteen-minute walk away.

The reception room that occupies the front of the first floor spans the entire width of the property and is complete with a large bay window plus a further sash window, allowing a multitude of light and air to flow into the bright and spacious room, creating a pleasant atmosphere. A generous double bedroom and contemporary shower room follow on and this floor is completed by a modern and spacious new kitchen that leads out to the property's private garden. The garden decked area and the ideal spot to enjoy al fresco living.

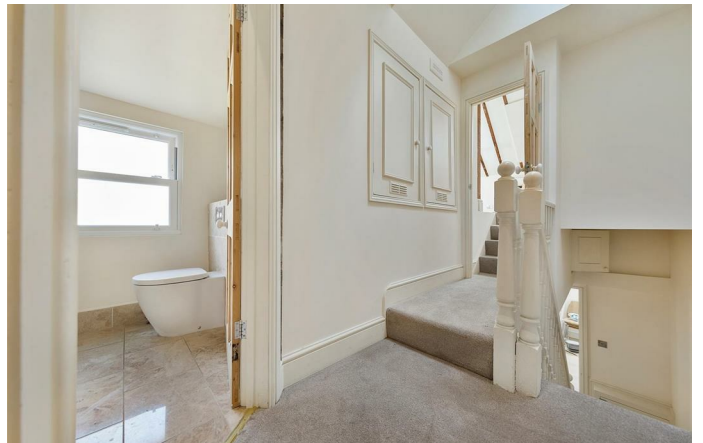
Just up the stairs, you are met by two further bedrooms. The master bedroom is complete with ample built-in storage. The third bedroom, as well-proportioned as the other two and as the flat is generous in size throughout, this is certainly reflected by the three almost equally sized bedrooms and the modern family bathroom completes this floor.

Just a short walk away the Effra Pub, famous for its jazz and reggae nights and only a short stroll to the restaurants and boutiques of Brixton Village and Pop Brixton. The amenities on the high street are a genuine fifteen -minute walk away, whilst the green open spaces of Brockwell Park and the weekend lifestyle of leafy Herne Hill are also close-by.

Features

- Private garden
- Victorian
- Three Bedroom
- Close to Central Brixton
- Short walk to Brockwell Park

Council tax band E EPC rating D (67)



Leander Road, Brixton, SW2

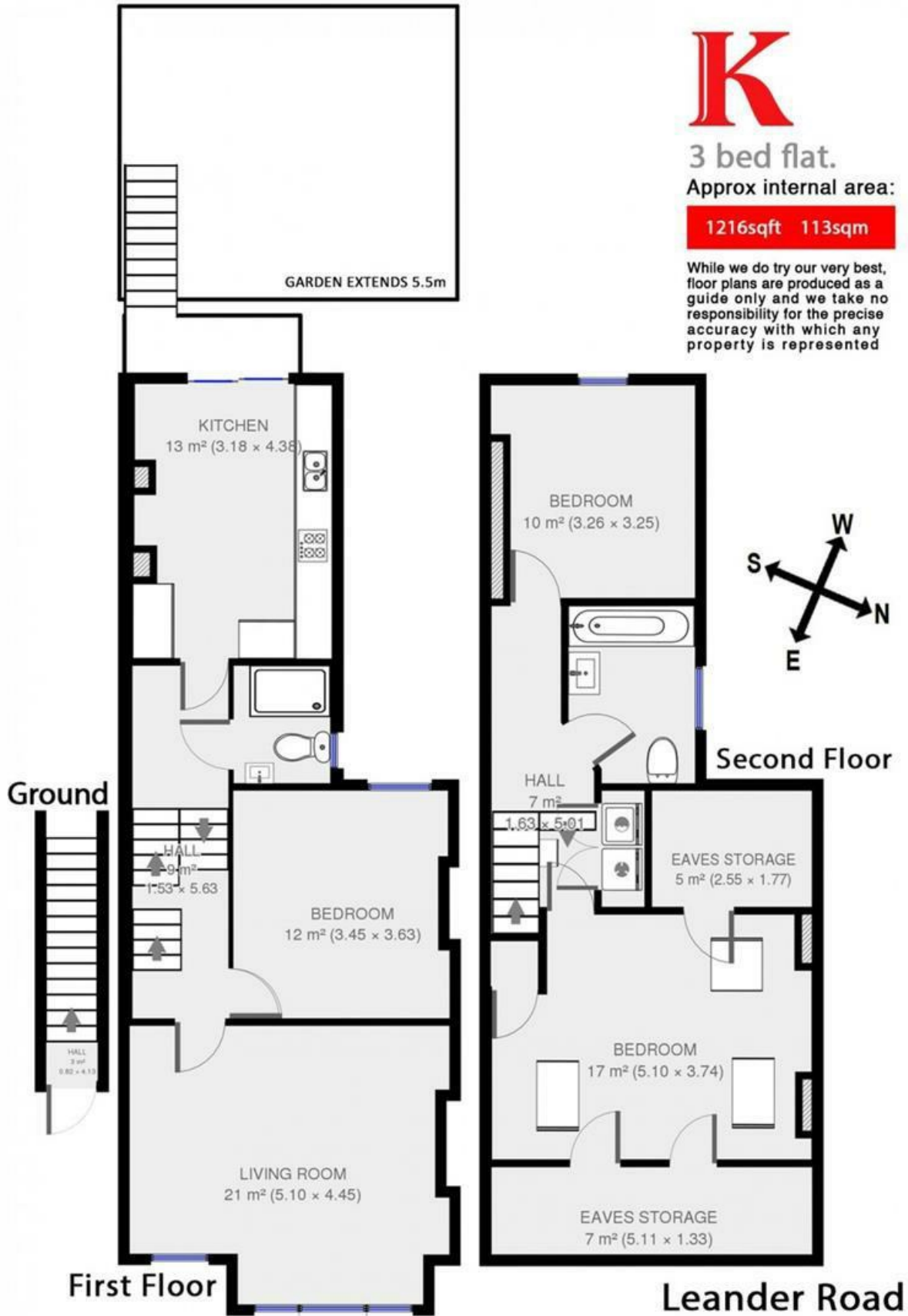


3 bed flat.

Approx internal area:

1216sqft 113sqm

While we do try our very best, floor plans are produced as a guide only and we take no responsibility for the precise accuracy with which any property is represented



First Floor

Leander Road

Leander Road, Brixton, SW2

