



Brixton Hill, Brixton, SW2

£425,000

2 bedroom flat for sale

Property Details

Almost 720 square feet of well-appointed internal space is arranged over the second floor of this period building, overlooking Brixton Hill. The reception room at the front of the property is a spacious room with high ceilings and characterful sash windows, creating a beautiful airy atmosphere within. Two very well sized double bedrooms follow on, one especially large and both with handy built-in storage options and an abundance of natural light. An attractive bathroom with modern, sleek tiling and high-quality finishes serves the two bedrooms and the property is completed by a thoughtfully utilised kitchen. The flat is finished in neutral, tasteful tones throughout, making it a particularly attractive property, ready to move into where the purchaser can stamp their own mark on this pocket of Brixton in their own time.

Features

- Two double bedrooms
- Secure second floor flat
- Almost 720 square feet of internal space
- Bright, airy and characterful
- Local amenities on the doorstep
- Victoria line in 10 minutes by foot
- Brixton centre and Herne Hill are within walking distance
- Brockwell Park
- Chain-free

Council tax band C EPC rating C (71)

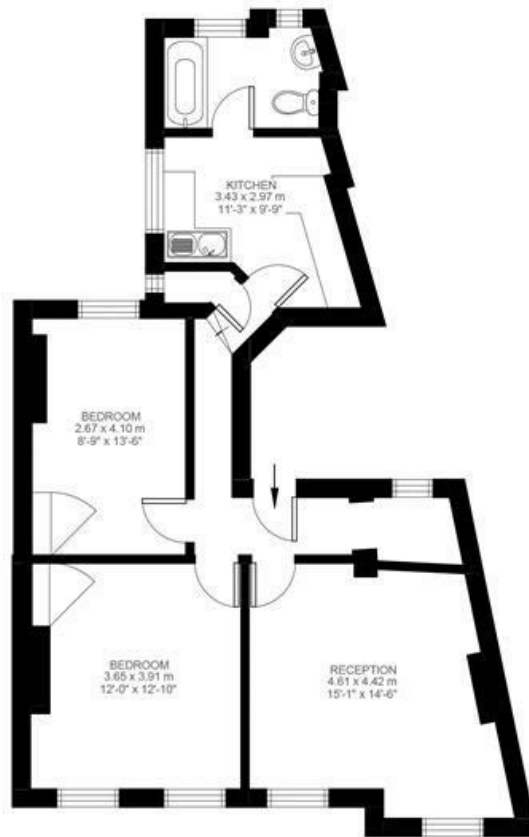


Brixton Hill, Brixton, SW2

Brixton Hill, Brixton, SW2

2 Bedroom Flat

Approximate internal area: **719 sqft 67 sqm**



Second Floor



While we do try our very best, floor plans are produced as a guide only and we take no responsibility for the precise accuracy with which any property is represented

Brixton Hill, Brixton, SW2

