

Loughborough Park, Brixton, SW9

2 bedroom flat - purpose built for sale

£565,000

Leasehold

Property Details

A two double bedroom, two bathroom apartment with private terrace, on the sixth floor of a modern build with intercom entry, CCTV, secure bike storage and lifts. Natural light is a running theme with light-drenching windows, yet the home still has an excellent energy rating, reducing bills and making the property peacefully quiet, added to by no neighbouring walls. The spacious open-plan reception has floor-to-ceiling windows and glass door opening out to the terrace with lovely views. The kitchen is integrated with modern appliances and plenty of storage space. Both bedrooms are generous doubles, the principal has built-in storage and an en-suite. The second is perfect for anyone wishing to let the spare room or to be used as a generous home office and guest room, or nursery as it is currently. The main bathroom is spacious with a bathtub and overhead shower. Completing the interior is significant hallway storage. Further benefits of this luxury development are manicured communal grounds, sports facilities, a playground plus the option to apply for an allotment. The property also comes with the possibility to apply for a parking permit.

Features

- Two double bedrooms
- Two bathrooms
- Private terrace
- Sixth floor with views
- Secure modern build
- Manicured communal grounds
- Bike storage and lifts
- Moments from central Brixton
- Short walk to Brockwell Park and Herne Hill
- Excellent transport links including Victoria Line, Thames Link and Trains

Council tax band D EPC rating B (84)

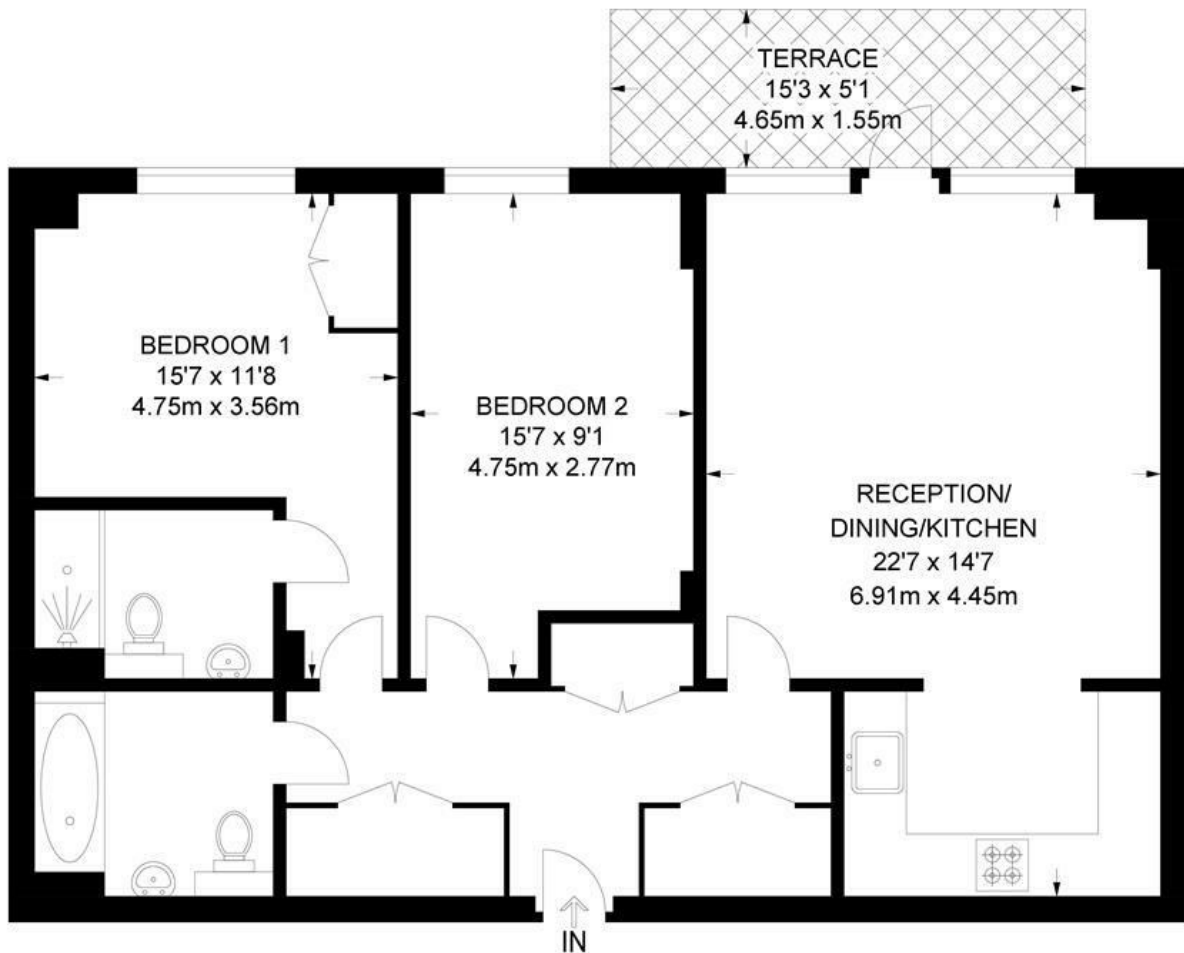




Loughborough Park, Brixton, SW9

Loughborough Park, SW9 2 Bedroom Flat

APPROXIMATE GROSS INTERNAL AREA: **817 SQ FT / 75.9 SQ M**



SIXTH FLOOR



While we try our very best, floor plans are produced as a guide only and we take no responsibility for the precise accuracy with which any property is represented.

Loughborough Park, Brixton, SW9

