

Bedford Road, Clapham, SW4

2 bedroom flat - conversion for sale

£725,000

Share of Freehold

Property Details

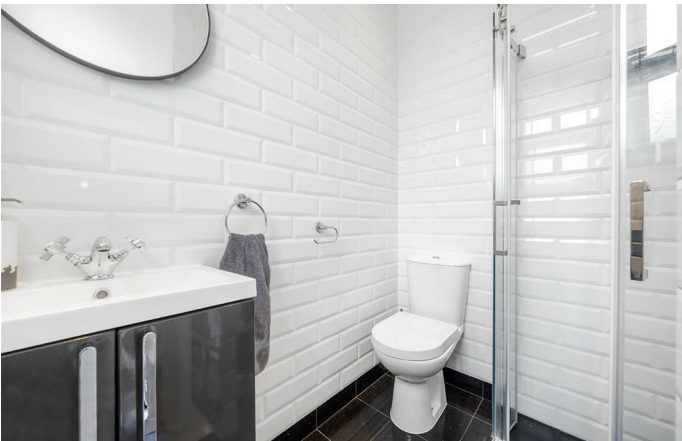
A fantastic two double bedroom, split-level garden flat in a semi-detached period house, lovingly refurbished during the time of ownership. A sizeable semi-open plan reception room is bathed in light through sash windows front and back, including original box shutters. High, corniced ceilings and feature fireplace add to the ambience. The Howdens kitchen wraps around with worktops transitioning into a breakfast bar, finished with a double butler sink with garden views. Stairs lead to a landing with garden access and the first bathroom, a conveniently located shower room with underfloor heating. An oasis of palms, the private landscaped garden has a side access gate, timber bike shed and timber storage bunker. There are allotments to the rear with the option to apply for a plot. Downstairs are both of the spacious double bedrooms, with garden views one of the rooms enjoys a particularly tranquil setting, with fitted wardrobes and further storage. The largest bedrooms is nestled behind shuttered windows, with plush carpets. The main bathroom has a bathtub plus overhead shower, with a feature wall and considered storage. Completing this floor is hallway storage and a utility, keeping the laundry quietly tucked away.

Council tax band C EPC rating D (67)

Features

- Two double bedrooms
- Two bathrooms
- Private landscaped garden with bicycle storage
- Side access to garden
- Period conversion
- Over 920 square feet split over two floors
- Clapham High Street just a six-minute stroll
- Brixton within walking distance
- Northern and Victoria tube lines
- Share of freehold

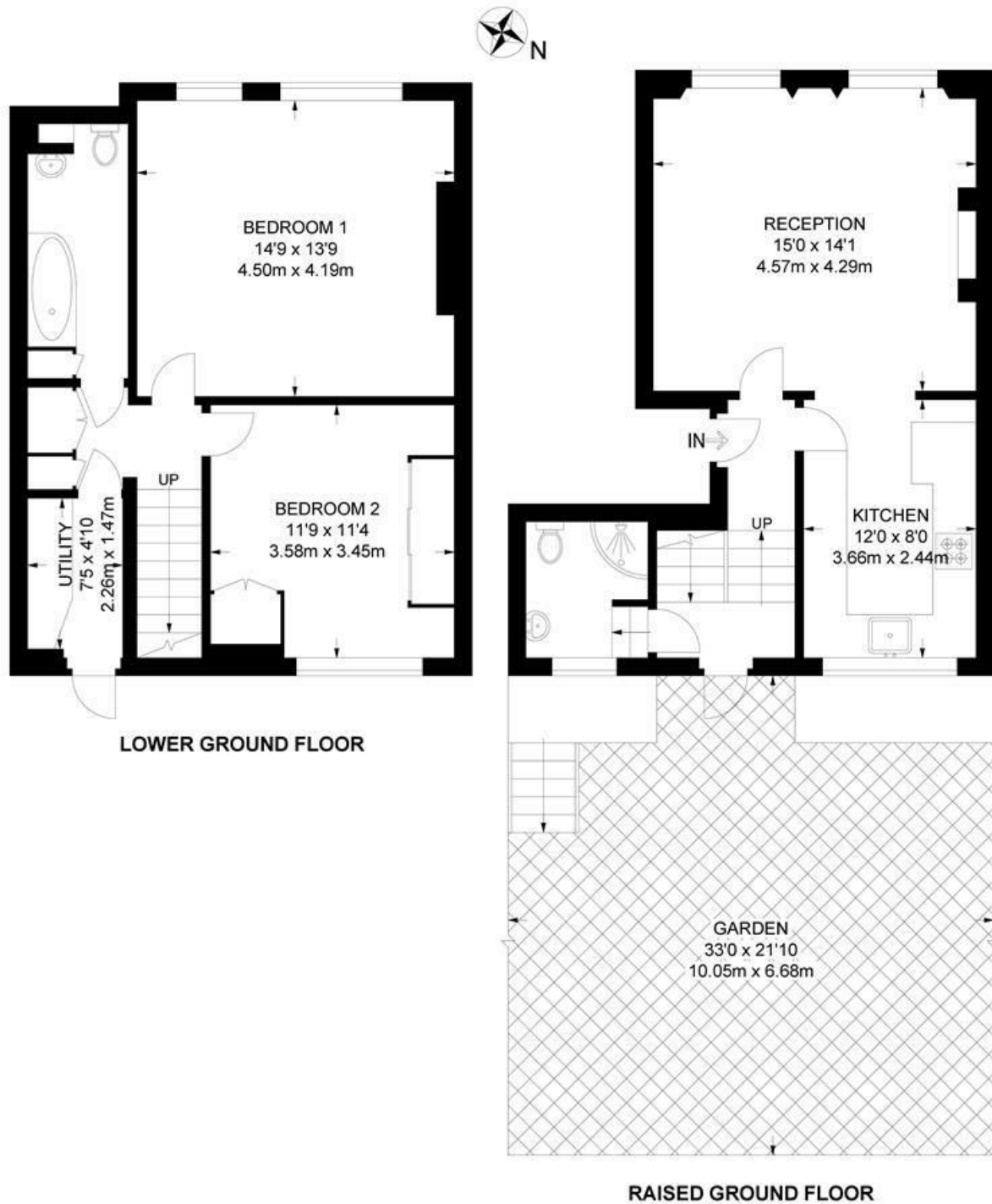




Bedford Road, Clapham, SW4

Bedford Road, SW4
2 Bedroom Flat

APPROXIMATE GROSS INTERNAL AREA: 924 SQ FT / 85.8 SQ M



While we try our very best, floor plans are produced as a guide only and we take no responsibility for the precise accuracy with which any property is represented.

Bedford Road, Clapham, SW4

