



Helix Road, Brixton, SW2

2 bedroom flat to let

£485 Per Week

Unfurnished

Property Details

This great two bedroom split level flat on Helix road is in a great residential location close to Brockwell Park. Everything about this flat is brilliant, from its large bright reception to its modern bathroom and two generously proportioned double bedrooms. The large modern kitchen has plenty of room for dining and host dinner parties, with the high gloss finish and integrated appliances, you can tell the landlord has paid great attention to detail. The location cannot be understated; moments from the heart of Brixton's attractive amenities and tube station, with London's most cherished outside space on the doorstep Brockwell Park.

Council tax band D EPC rating (null)

Features

- Split-level
- Two bedroom
- Close to transport links
- Period features
- Light and airy
- Unfurnished
- Close to Brixton Station





2 Bed Flat

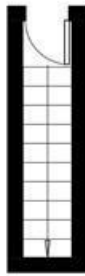
Approx internal area:

958 sqft 89 sqm

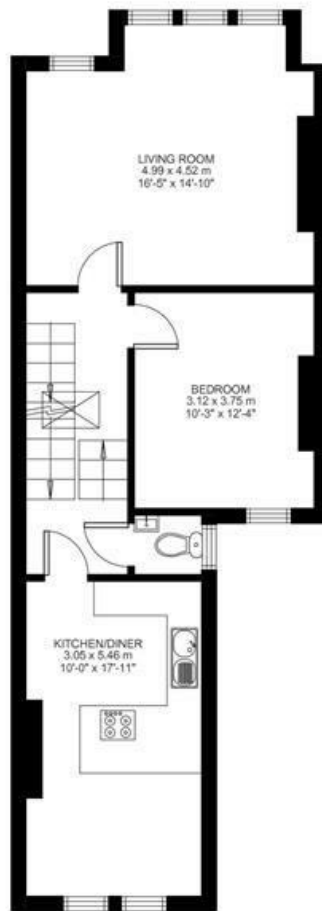
While we do try our very best, floor plans are produced as a guide only and we take no responsibility for the precise accuracy with which any property is represented

Helix Road

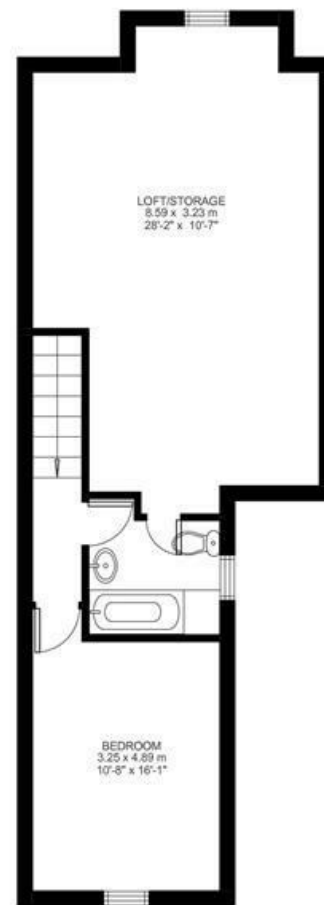
Ground Floor



First Floor



Second Floor



Helix Road, Brixton, SW2

