



Oakmead Road, Balham, SW12

1 bedroom flat - conversion for sale

£515,000

Share of Freehold

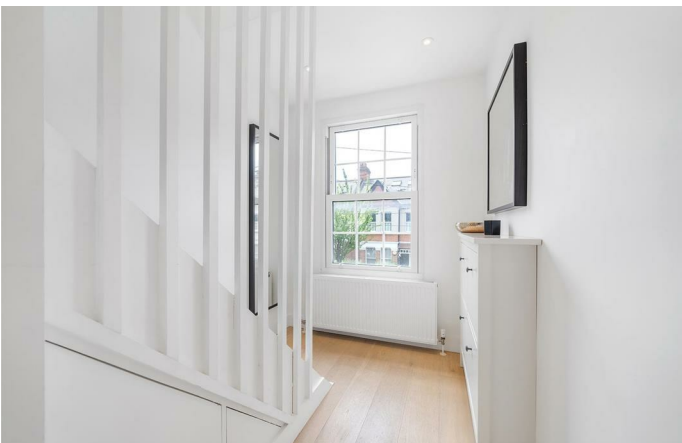
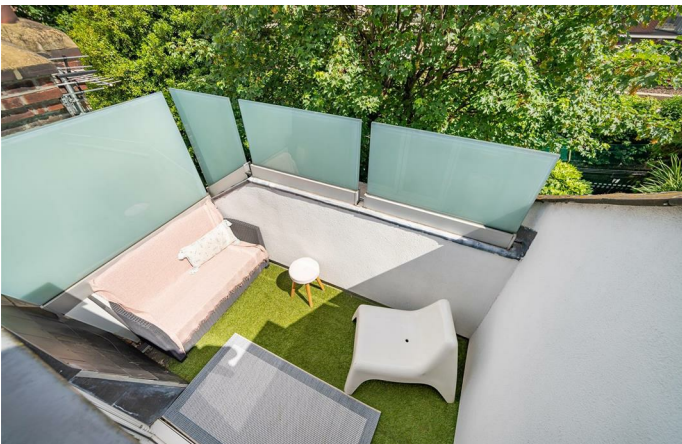
Property Details

An appealing one double bedroom flat with a private terrace, in an attractive converted house in the heart of Balham. Set to the upper floor the property is wonderfully private with natural light creating an inviting ambience. The split-level entrance hallway is no exception with a charming stairwell winding up to the main landing. The open-plan reception forms the heart of the home, with dimensions to lounge, dine and cook, this appealing room is stylishly finished and ideal for hosting. The kitchen offers ample storage within contemporary gloss cabinetry, wrapping around to maximise space whilst enhancing the sociable vibe. Nestled to the rear, the bedroom is a spacious double, with fitted wardrobes and bi-fold doors leading to the private terrace. Framed by privacy glass which acts as wind break, this secluded terrace can be enjoyed throughout the seasons, from sun to starry skies. The luxurious bathroom is equipped with a bathtub plus overhead rain shower with storage, heated towel rail and lighting features for a soothing ambience. Storage is plentiful, with under stair storage in the entrance, built-in storage in every room, plus access to the eaves. Perfect for those seeking a vibrant urban lifestyle in a well-connected area.

Council tax band C EPC rating C (79)

Features

- One double bedroom
- Private terrace
- Bright and airy throughout
- Beautifully presented
- Plentiful storage
- Central location just off Balham High Road
- Vast array of amenities on the doorstep
- Northern Line and National Rail both a two-minute walk
- Three Commons within strolling distance
- Share of freehold

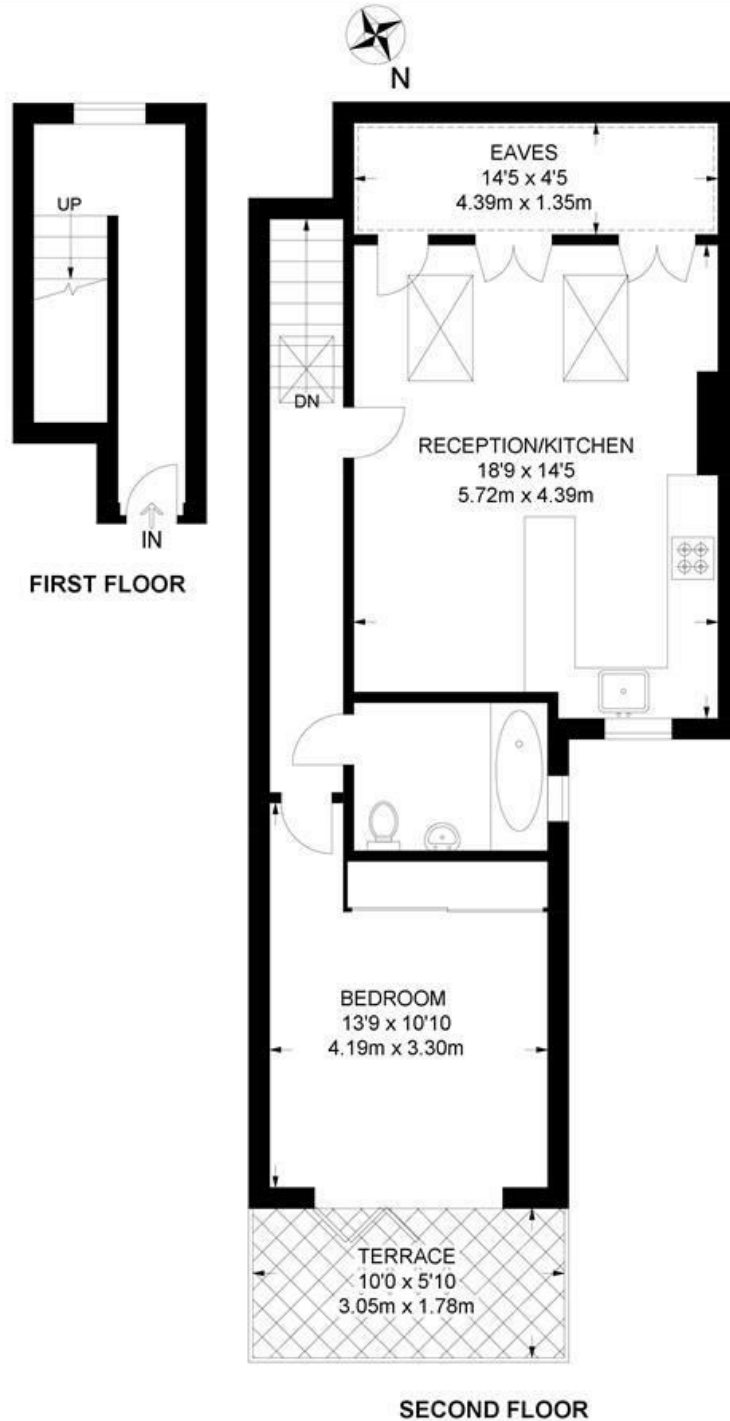


Oakmead Road, Balham, SW12

Oakmead Road, SW12
1 Bedroom Flat

APPROXIMATE GROSS INTERNAL AREA WITH EAVES : 689 SQ FT / 64 SQ M

APPROXIMATE GROSS INTERNAL AREA WITHOUT EAVES : 625 SQ FT / 58 SQ M



While we try our very best, floor plans are produced as a guide only and we take no responsibility for the precise accuracy with which any property is represented.

Oakmead Road, Balham, SW12

