



Norwood Road, Herne Hill, SE24

2 bedroom flat to let

£380 Per Week

Part furnished

Property Details

This stunning, spacious two double bedroom apartment with a large shared garden in a post-war build moments from the entrance to Brockwell Park.

Features

- Two double bedrooms
- Communal garden
- Close to Brockwell park
- Under 5 minute walk from Herne Hill over ground
- Separate kitchen
- Light and airy

Council tax band C EPC rating D (61)



Norwood Road, Herne Hill, SE24



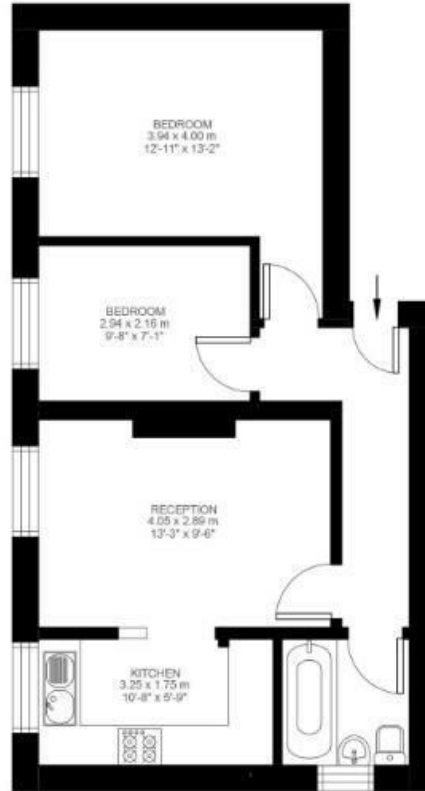
Norwood Road

2 Bedroom Flat

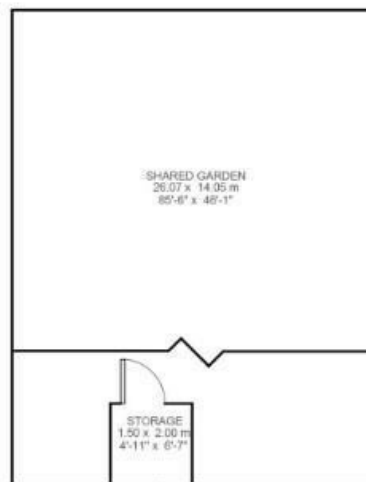
Approx internal area:

520 sqft 48 sqm

While we do try our very best, floor plans are produced as a guide only and we take no responsibility for the precise accuracy with which any property is represented



Ground Floor



Norwood Road, Herne Hill, SE24

