



Fairmount Road, London, SW2

£625,000

2 bedroom flat for sale

Property Details

A beautiful two double bedroom Victorian garden flat, located on one of Brixton's coveted residential streets, Fairmount Road. This characterful flat has been lovingly extended by the current owner, resulting in a beautiful home with an appealing blend of contemporary design and period features. With fantastic living space, two double bedrooms and a secluded garden to match, it is hard to remind yourself that you are, indeed, in the heart of Brixton, with easy access into Central London. Brixton is a twelve-minute walk and Herne Hill is a seventeen-minute stroll through Brockwell Park.

Features

- Private garden
- Victorian
- Characterful features
- Highly desirable road

Council tax band C EPC rating (null)



Fairmount Road

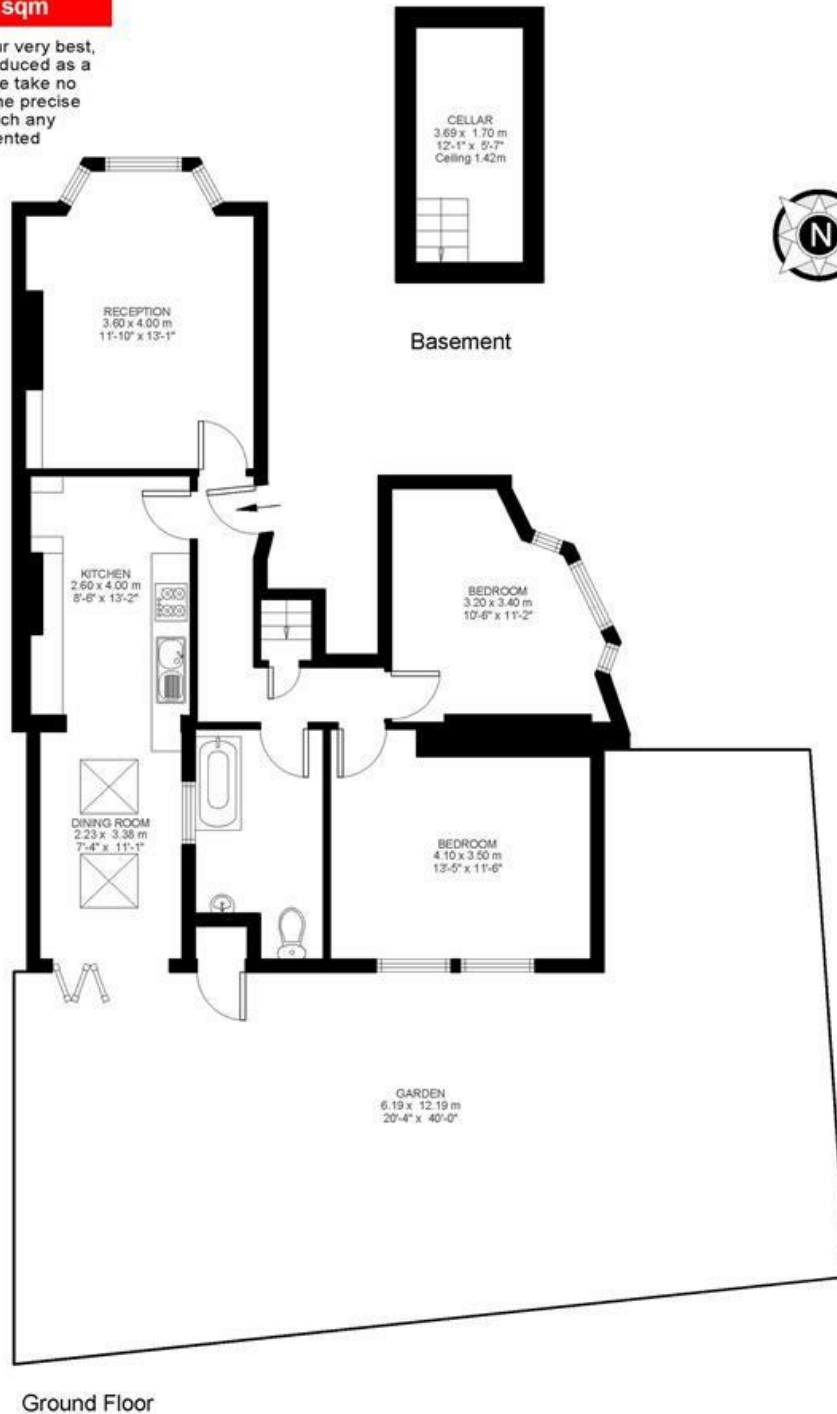


2 Bed flat

Approx internal area:

687 sqft 64 sqm

While we do try our very best, floor plans are produced as a guide only and we take no responsibility for the precise accuracy with which any property is represented



Fairmount Road, London, SW2

