



Elm Park, Brixton, SW2

4 bedroom house for sale

Freehold

Property Details

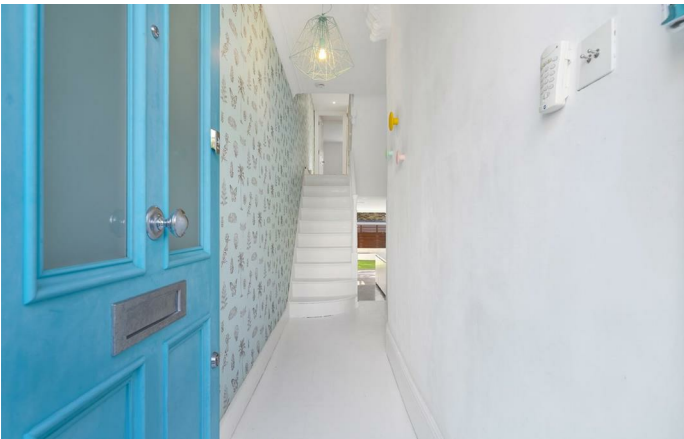
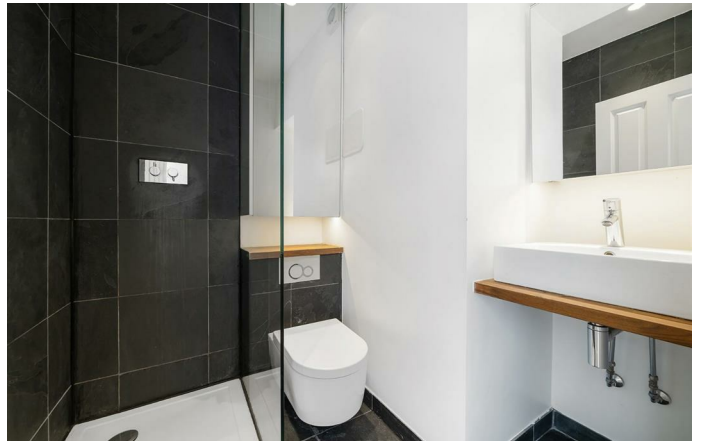
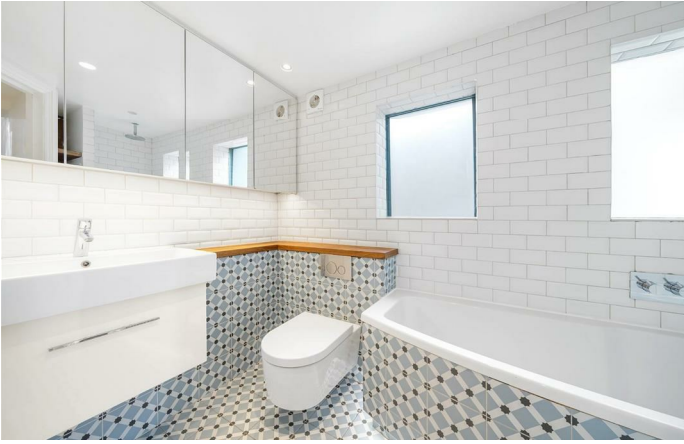
With over 1,500 square feet split over three floors, this four-bedroom Victorian townhouse is ideally located a short stroll from the highly regarded Brockwell Park. The centre of Brixton is a twelve-fifteen minute walk, with all it has to offer in terms of restaurants, nightlife and transport links, whilst two of Brixton's most sought-after primary schools are also within a short stroll. Herne Hill is a fifteen-minute walk through Brockwell Park, with its village charm and eclectic array of shops and pubs. With Brixton Village, Brockwell Park, and Herne Hill's pubs and restaurants all on your doorstep, there is something to cater for all purchasers. Bright and airy with high ceilings and attractive period features, the property portrays a beautiful balance of characterful charm and contemporary design. This family home is in great condition, perfect for anyone looking to move into a new home hassle-free and then stamp their own mark on this desirable pocket of residential Brixton. Chain-free and freehold.

Features

- Four double bedrooms
- Two bathrooms and a WC
- Victorian family home
- A mix of period features and contemporary design
- Over 1,500 square feet of internal space
- Low-maintenance private secluded garden
- A popular road a short stroll from Brockwell Park
- Brixton & Herne Hill town centres in under fifteen minutes
- Freehold and chain-free

Council tax band E EPC rating D (55)





Elm Park, Brixton, SW2

Elm Park, SW2
4 Bedroom House

APPROXIMATE GROSS INTERNAL AREA INCLUDING CELLAR: 1504 SQ FT / 139.7 SQ M



While we try our very best, floor plans are produced as a guide only and we take no responsibility for the precise accuracy with which any property is represented.

Elm Park, Brixton, SW2

