



**Saltoun Road, Brixton, SW2**

2 bedroom flat - conversion for sale

**£520,000**

Share of Freehold

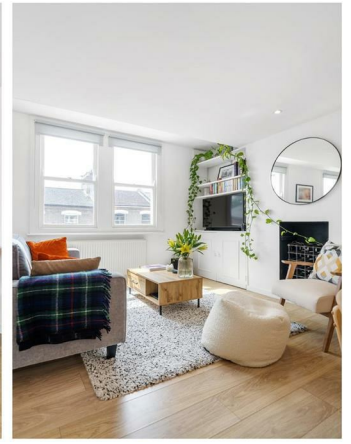
## Property Details

An alluring two double bedroom Victorian conversion on a popular residential street. Natural light through modern sash windows and a stylish, contemporary finish combine to create a fresh and elegant feel throughout, ideal for a stress-free move. The open-plan reception is a light and airy heart of the home, with dimensions to lounge, dine and cook, beautifully finished and ideal for hosting with neat yet neutral flooring defining the zones of the room. Three sash windows, shelving around the chimney and modern downlights add to the appeal of this charming space. Maximising space whilst enhancing the sociable vibe, the contemporary kitchen wraps around to offer ample storage and an integrated dishwasher within gloss cabinetry, topped with contrasting worktops. Nestled to the rear, both bedrooms are comfortable doubles. One is currently a spacious home office, yet is easily re-purposed back into a bedroom if preferred. Ideal for sharers, the bedrooms are separated from one another allowing a level of privacy for both. The luxurious bathroom is equipped with a double-ended bathtub, with a rain shower overhead, boasting useful storage and a heated towel rail and finished with soothingly attractive tiling.

## Features

- Two double bedrooms
- Victorian conversion
- Tastefully presented throughout
- Bright and airy
- Popular residential street
- Central Brixton on the doorstep
- Victoria Line a six-minute walk
- Brockwell Park a nine-minute stroll
- Share of freehold
- Chain-free

Council tax band C    EPC rating C (69)

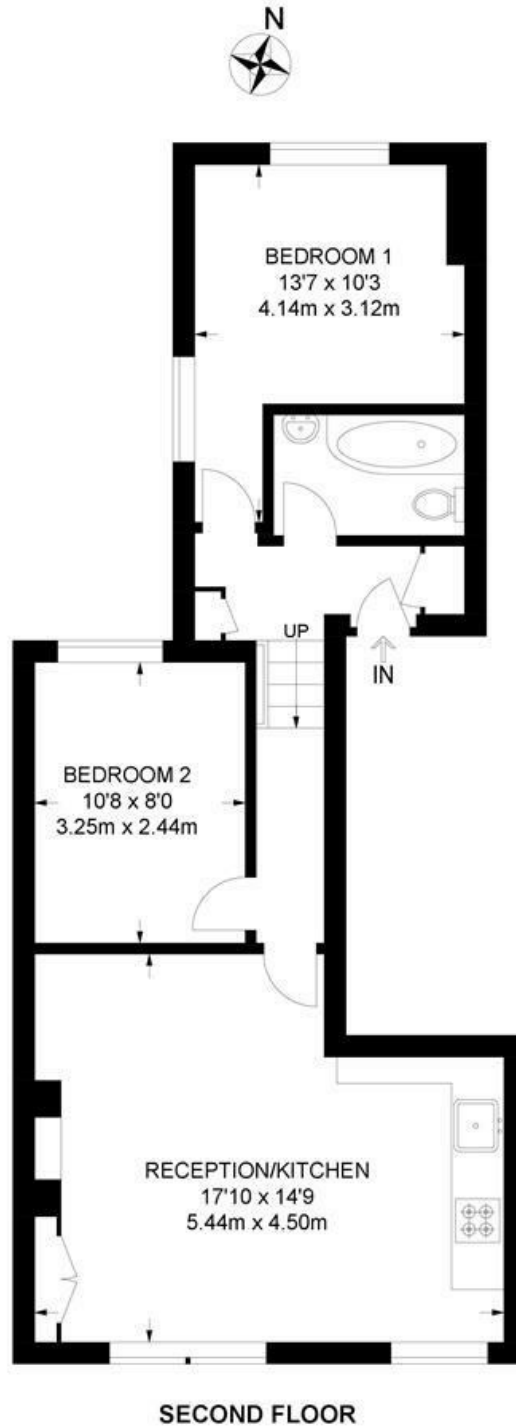




Saltoun Road, Brixton, SW2

**Saltoun Road, SW2**  
**2 Bedroom Flat**

APPROXIMATE GROSS INTERNAL AREA: **542 SQ FT / 50.3 SQ M**



While we try our very best, floor plans are produced as a guide only and we take no responsibility for the precise accuracy with which any property is represented.

Saltoun Road, Brixton, SW2

