

Kellett Road, Brixton, SW2

2 bedroom flat - conversion to let

£519 Per Week

Furnished

Property Details

NO HMO - only suitable for single occupant, max two sharers, couple or single family unit tenancy.

A perfectly laid-out, extremely spacious, two double bedroom, one study flat on the top floor of an attractive Victorian terrace, on one of Brixton's most sought-after streets. Kellett Road is highly sought-after for its character and proximity to central Brixton, Herne Hill and Brockwell Park. The property is situated in moments away from the bars, restaurants and cafés of Brixton Village and Pop Brixton. This superb flat is within a four-minute walk of both the tube station and the train station. Victoria Station is accessible in just thirteen minutes door-to-door, and the City is only twenty-one minutes away. Oxford Circus and the bright lights of Soho can be reached in just 18 minutes.

The property has a spacious 'L-shaped' open plan living space, with a modern kitchen, dining area and a comfortable dedicated living space, creating a sociable and airy reception room. The generous master bedroom has built-in storage and the second bedroom is also a sizeable double. The additional study spare room adds extra value for those tenants who work from home or need some extra space. A contemporary bathroom and a utility closet complete this fantastic top floor flat.

Vibrant and bustling Brixton Village is just around the corner, but the property feels like a million miles

Features

- Two bedrooms
- Study / spare room
- Characterful features
- Bright and airy atmosphere throughout
- Located in the heart of Brixton, moments from the tube and rail station
- A five-minute walk to Brockwell Park
- Victorian conversion

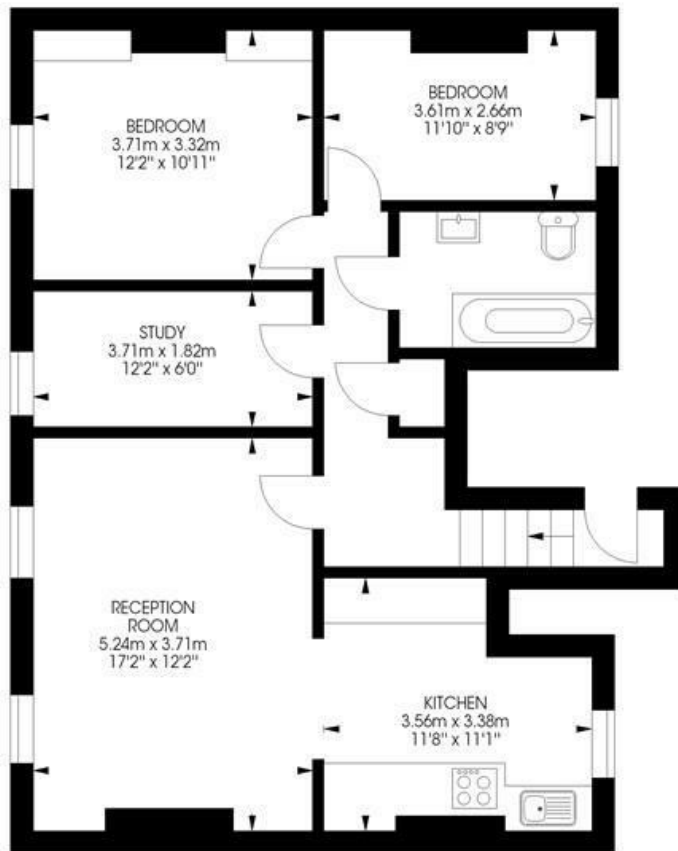
Council tax band D EPC rating C (70)



Kellett Road, Brixton, SW2

**Kellett Road, Brixton, SW2
2 Bedroom Flat**

Approximate internal area: **797 sqft / 74 sqm**



Second Floor



While we try our very best, floor plans are produced as a guide only and we take no responsibility for the precise accuracy with which any property is represented.

Kellett Road, Brixton, SW2

