



**Tunstall Road, Brixton, SW9**

1 bedroom flat - conversion for sale

**£500,000**

Leasehold

## Property Details

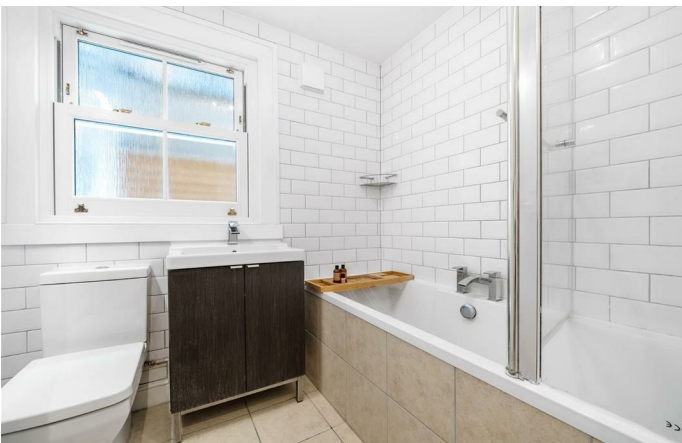
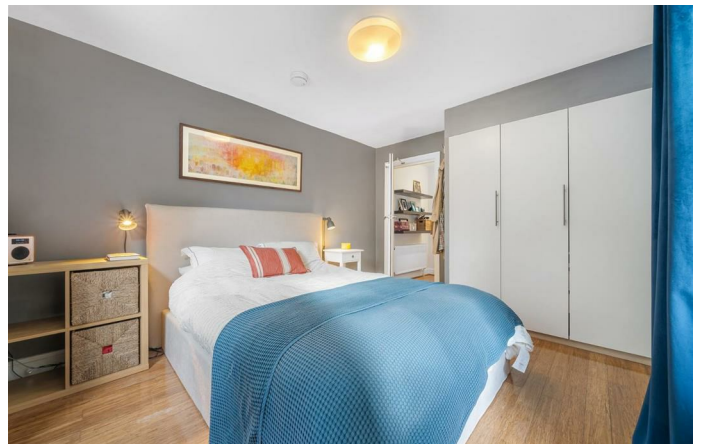
A beautiful one double bedroom Victorian apartment with a private garden on a friendly residential street. The heart of the home is the stylish reception, a fantastic entertaining space with bespoke shelving, a feature fireplace and large window dressed with shutters. Creating a wonderful flow, wooden flooring sweeps through the room and into the separate kitchen. Installed around two years ago, the tastefully finished kitchen provides all you may need in terms of worktop and storage, wrapping around to maximise the space. Double doors from the kitchen allow the living space to flow seamlessly into the low-maintenance private South-facing garden, laid to faux lawn for greenery all year round, framed with planted borders. Tucked away quietly overlooking the lovely secluded garden is the double bedroom, a soothing space with generous built-in wardrobes. Adjacent a contemporary bathroom is equipped with a double-ended bathtub with overhead shower and storage. Completing this attractive home is a storage cupboard in the hallway. Of further benefit, new double-glazed windows were installed around four years ago and there is a solid local community with a street WhatsApp group.

## Features

- One double bedroom
- South-facing private garden
- Victorian conversion
- Over 500 square feet of internal living space
- Bright and airy throughout
- Sought-after location in the heart of Brixton
- Friendly residential street
- Victoria Line a three minute walk
- Brockwell Park a fifteen minute stroll

Council tax band C    EPC rating D (66)

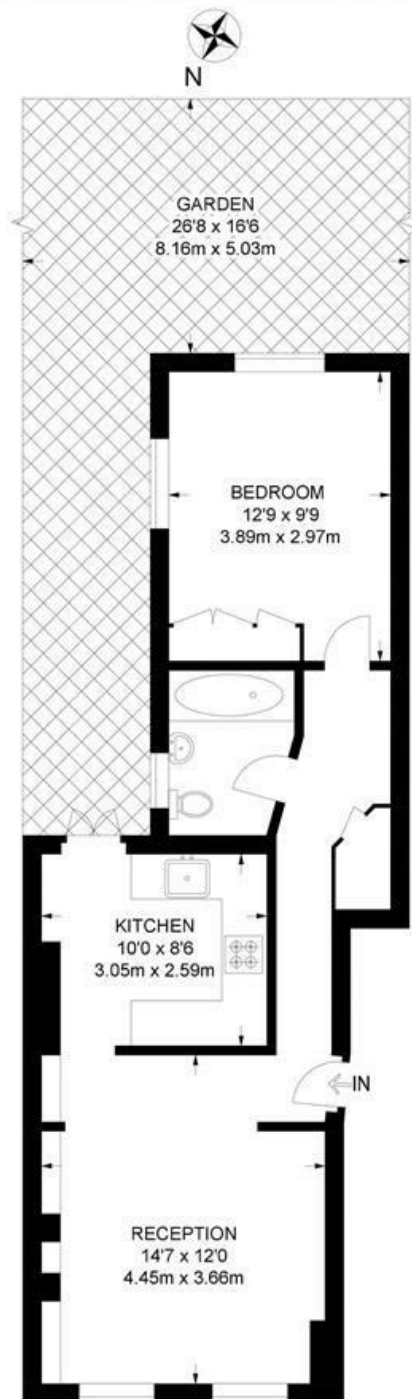




Tunstall Road, Brixton, SW9

**Tunstall Road, SW9**  
**1 Bedroom Flat**

APPROXIMATE GROSS INTERNAL AREA: 514 SQ FT / 47.7 SQ M



GROUND FLOOR



While we try our very best, floor plans are produced as a guide only and we take no responsibility for the precise accuracy with which any property is represented.



Tunstall Road, Brixton, SW9

