



## Boscombe Gardens, Streatham, SW16

1 bedroom flat to let

£335 Per Week

Furnished

### Property Details

A spacious one bedroom flat situated in the ever popular Streatham Common area, and is just around a two minute walk from the Common itself. This bright, spacious apartment has been owner occupied and has therefore been thoughtfully refurbished to a high, modern standard throughout. In brief, the flat comprises of a large lounge that leads on to the fresh white kitchen, a larger than average double bedroom and main bathroom. With wooden floors, statement tiling and access to the private garden from two rooms, this is perfect for a young professional or a couple looking for a comforting home away from the hustle and bustle of London.

Council tax band B    EPC rating C (73)

### Features

- One bedroom
- Bright and airy
- Around a 2 minute walk to Streatham Common
- Separate Kitchen
- Private garden
- Contemporary interior
- Newly decorated





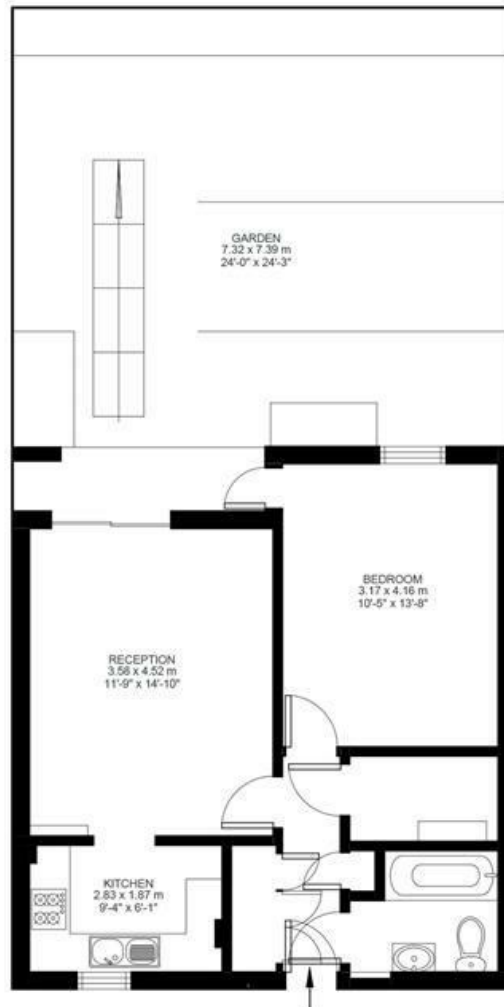
## Boscombe Gardens

1 Bed flat

Approx internal area:

**518 sqft 48 sqm**

While we do try our very best, floor plans are produced as a guide only and we take no responsibility for the precise accuracy with which any property is represented



Lower Ground Floor



Boscombe Gardens, Streatham, SW16

