



Brixton Hill, Brixton, SW2

2 bedroom flat - purpose built for sale

£425,000

Leasehold

Property Details

A spacious split-level two bedroom flat on Brixton Hill, set within a characterful Art Deco building with well-maintained shared gardens. This appealing home is tucked away to the rear of the building enjoying a quiet setting over the fifth and sixth floors, whilst still benefitting from a fantastic location minutes from the heart of Brixton. The reception room offers sizeable proportions, flooded with natural light from large windows and featuring wooden flooring, with comfortable space to lounge on a large sofa or dine with friends. Keeping the dishes tucked separately away, the kitchen sits adjacent with cabinetry down both sides for ample storage and plentiful work surfaces. Hallway storage provides a place to keep belongings neatly away. Upstairs, both bedrooms are generous doubles, offering plenty of space for a desk or dressing table also and enjoying views through large windows over the rooftops to one side and leafy views of the gardens to the other. The bathroom is modern yet traditionally styled equipped with both shower and bath. Further benefits include a large shared garden, electric gates and a lift, as well as a friendly community spirit.

Council tax band C EPC rating (null)

Features

- Two double bedrooms
- Large communal garden
- Sought-after Art Deco building
- Quietly tucked away to the rear of the building
- Split over fifth and sixth floor with city views
- Separate kitchen and reception
- Located a three-minute stroll to central Brixton
- Start of the Victoria line a five-minute walk
- Short stroll to Brockwell Park
- Chain-free

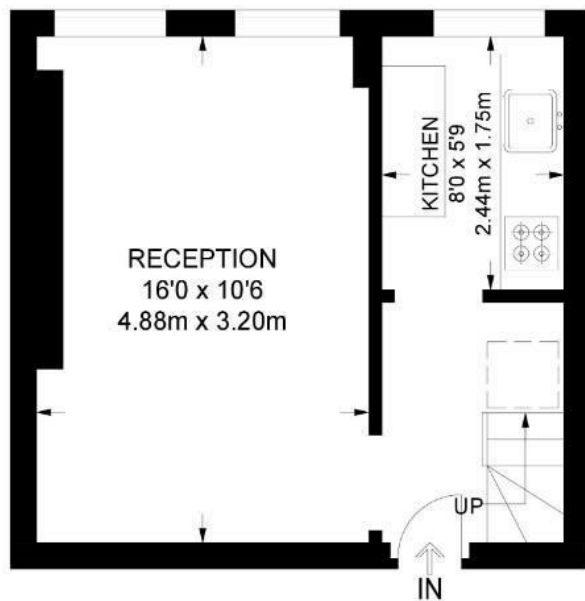




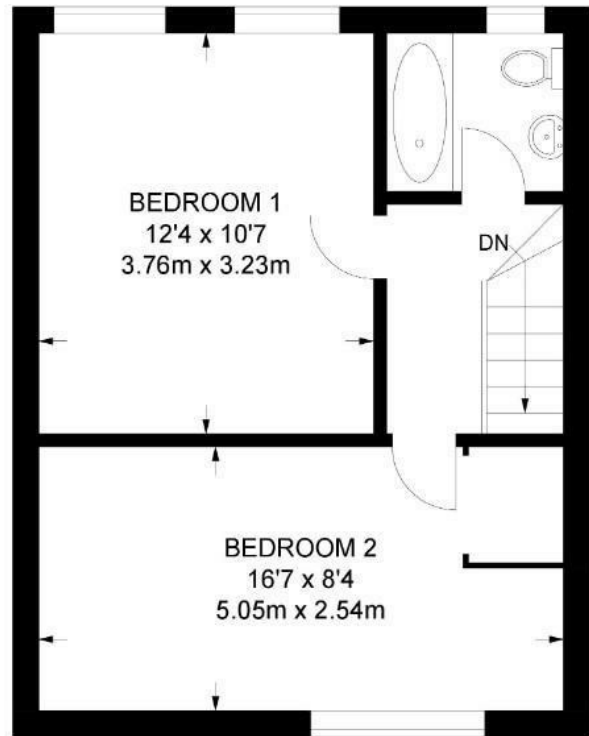
Brixton Hill, Brixton, SW2

Brixton Hill, SW2
2 Bedroom Flat

APPROXIMATE GROSS INTERNAL AREA: **622 SQ FT / 57.8 SQ M**



FIFTH FLOOR



SIXTH FLOOR



While we try our very best, floor plans are produced as a guide only and we take no responsibility for the precise accuracy with which any property is represented.

Brixton Hill, Brixton, SW2

