



Sandmere Road, Clapham, SW4

2 bedroom flat - conversion for sale

£525,000

Leasehold

Property Details

A characterful two double bedroom Victorian apartment on a desirable, peaceful street in a low traffic residential pocket. Packed full of original features, this charming home offers a sympathetic layout whilst lovingly preserved features offer all the charm and character of the era in which it was built. The bright South-facing living room is bathed in light through a large bay window resulting in an airy ambience, enhanced by high, ornately corniced ceilings, a wonderful space in which to dine or unwind. Double sliding doors lead to the kitchen, allowing the two rooms to be enjoyed open plan or separated when a cosy environment is desired. Tastefully designed, the shaker kitchen provides ample storage within grey cabinetry topped with wooden worktops to mirror the floor, tying the space together whilst allowing the characterful corning to shine. Peacefully positioned away from the already quiet street both bedrooms enjoy leafy views, whilst being separated from one another for privacy. The bedrooms are both doubles, neutrally presented with carpets and fitted wardrobes, one also has a feature fireplace. The bathroom is a soothing space with home spa styling, equipped with a bathtub plus overhead rain shower.

Features

- Two double bedrooms
- Victorian conversion
- Characterful features
- Tastefully presented throughout
- Desirable neighbourly street
- Amenities in every direction
- Clapham High Street a six-minute walk
- Central Brixton a ten-minute stroll
- Northern and Victoria tube lines
- Chain-free

Council tax band D EPC rating C (70)

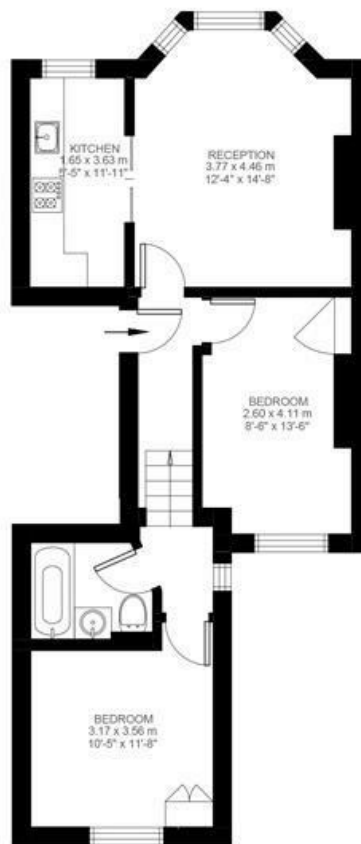


Sandmere Road, Clapham, SW4

Sandmere Road, Clapham, SW4

2 Bedroom Flat

Approximate internal area: 588 sqft 55 sqm



First Floor



While we do try our very best, floor plans are produced as a guide only and we take no responsibility for the precise accuracy with which any property is represented.

Sandmere Road, Clapham, SW4

