

**Brading Road, Brixton, SW2**

1 bedroom flat to let

£380 Per Week

Part furnished

Property Details

This lovely Victorian one bedroom flat is situated on one of the most sought after streets in Brixton. The flat comprises a spacious open plan kitchen reception room, a spacious double bedroom and a sleek modern family size bathroom. The property is a five minute walk from what many local residents champion as London's best open space, Brockwell Park, and is close to Herne Hill station. A short walk down the hill takes you to Brixton tube station and the culinary wonders of Brixton Village.

Features

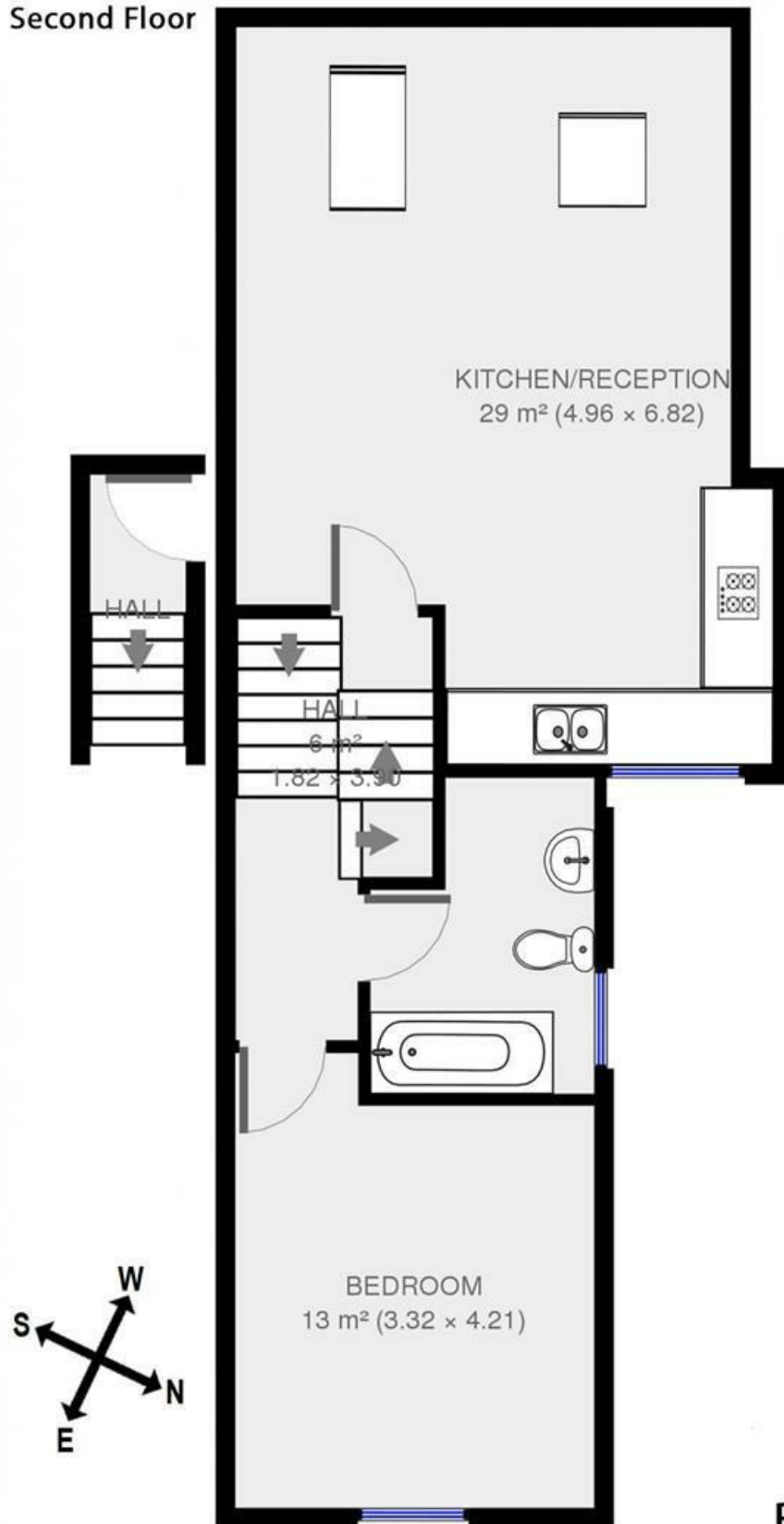
- One Double Bedroom
- Close to Brockwell Park
- Close to Transport Links
- Light and Airy
- Skylights

Council tax band C EPC rating D (59)



Brading Road, Brixton, SW2

Second Floor



1 bed flat.

Approx internal area:

603 sqft 56 sqm

While we do try our very best, floor plans are produced as a guide only and we take no responsibility for the precise accuracy with which any property is represented

Brading Road

Brading Road, Brixton, SW2

