



Loughborough Park, Brixton, SW9

2 bedroom flat - purpose built for sale

£550,000

Leasehold

Property Details

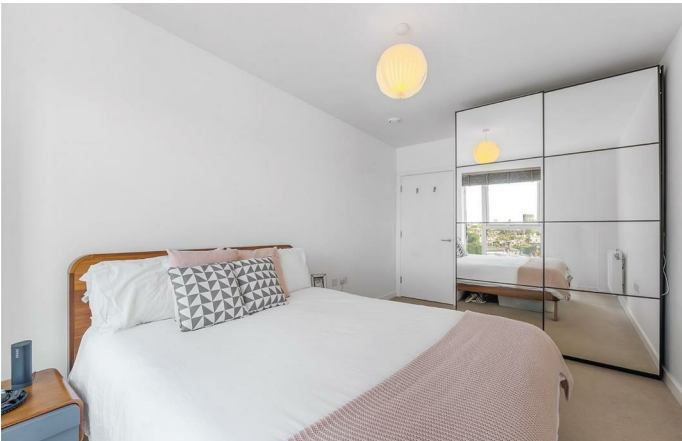
A two double bedroom, two bathroom apartment with private terrace, on the seventh floor of a modern build with intercom entry, CCTV, secure bike storage and lifts. Great views are a running theme with light-drenching windows, yet the home still has an excellent energy rating, reducing bills and making the property peacefully quiet. The spacious open-plan reception has floor-to-ceiling windows and glass door opening out to the terrace with glass balustrades enhancing the impressive views. The kitchen is integrated with modern appliances and plenty of storage space. Both bedrooms are generous doubles, one with built-in wardrobes and an en-suite. The main bathroom is spacious with a bathtub and overhead shower. Completing the interior is significant hallway storage. Further benefits of this luxury development are manicured communal grounds, sports facilities, a playground plus the option to apply for an allotment. The property also comes with the possibility to apply for a parking permit. The property was purchased as Shared Ownership by the current vendors and will be staircased in with the sale so the new owner will be purchasing with full ownership.

Features

- Two double bedrooms
- Two bathrooms
- Private terrace
- Seventh floor with views
- Secure modern build
- Manicured communal grounds
- Bike storage and lifts
- Moments from central Brixton
- Short walk to Brockwell Park and Herne Hill
- Excellent transport links including Victoria Line, Thames Link and Trains

Council tax band D EPC rating B (83)

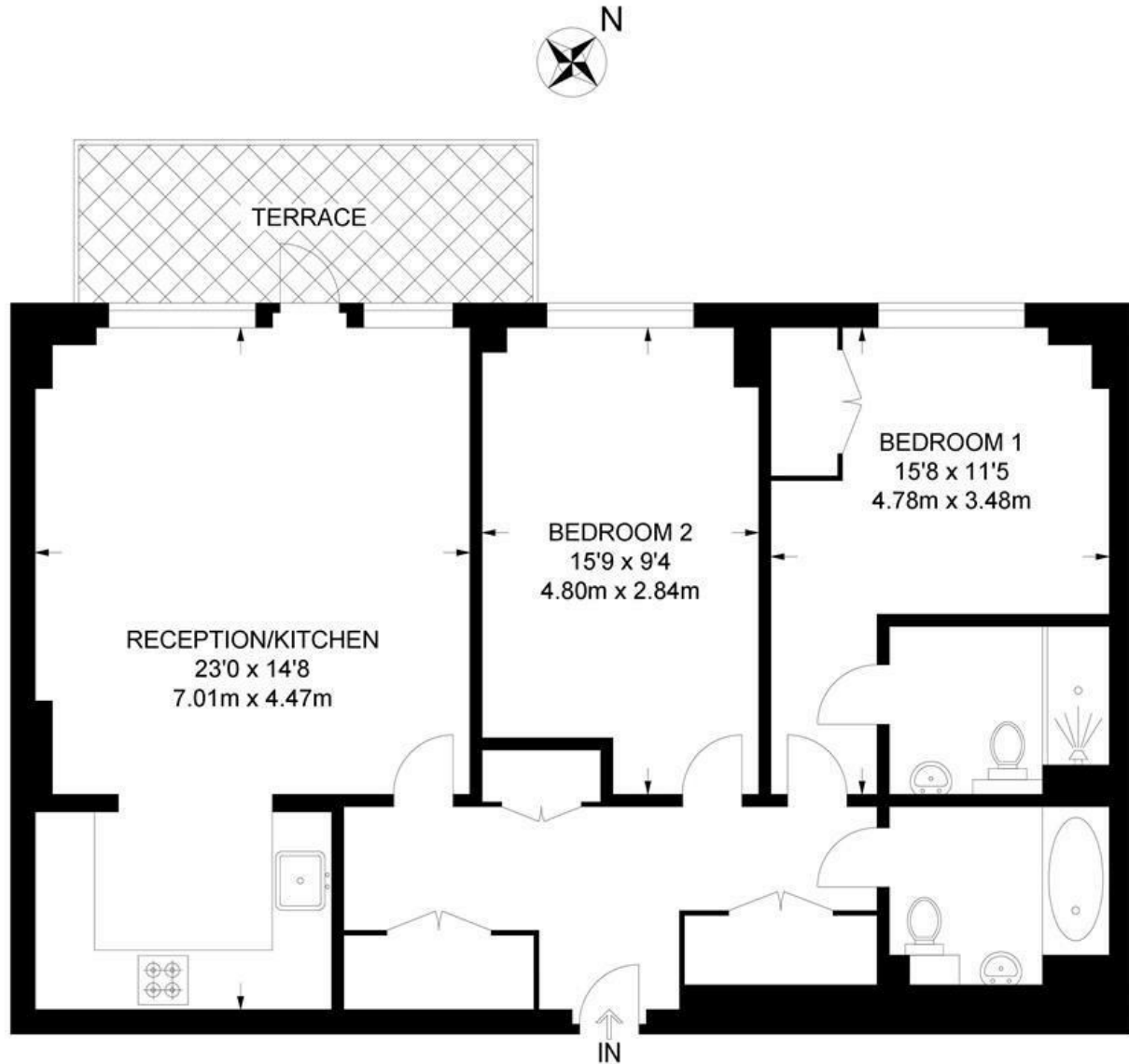




Loughborough Park, Brixton, SW9

Loughborough Park, SW9
2 Bedroom Flat

APPROXIMATE GROSS INTERNAL AREA: **834 SQ FT / 77.5 SQ M**



SEVENTH FLOOR



While we try our very best, floor plans are produced as a guide only and we take no responsibility for the precise accuracy with which any property is represented.

Loughborough Park, Brixton, SW9

