



**Lambert Road, Brixton, SW2**

3 bedroom flat - conversion for sale

**£775,000**

Share of Freehold

## Property Details

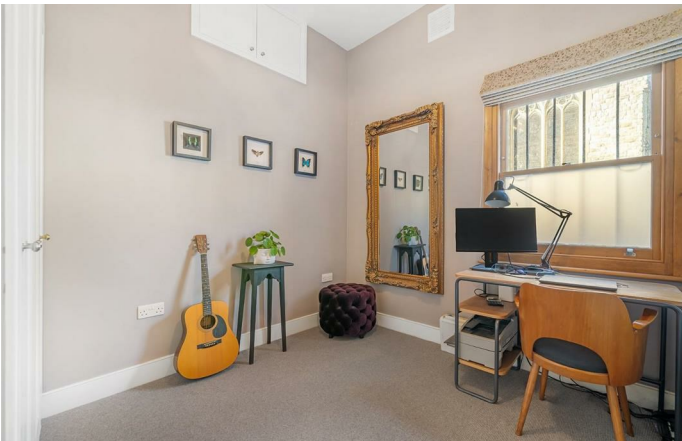
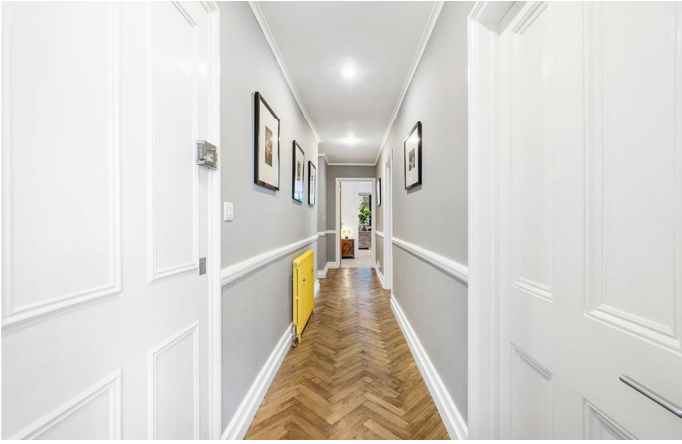
A wonderful three double-bedroom South-facing garden flat in a Victorian end-of-terrace conversion between Brixton and Clapham. Presented to a high standard throughout, the hallway with new solid oak parquet flooring leads to the heart of the home; the stunning open-plan, dual-aspect reception. Large, porcelain floor tiles, underfloor heating, neat storage, and glass bi-folding doors create a bright yet serene atmosphere with space for a dining table. Installed in 2022, the kitchen has statuario marble work surfaces, a breakfast bar, and a stylish range and sink. The private South-facing garden is a pretty oasis with additional light and privacy due to the positioning of the surrounding buildings. A rarity for period conversions, the three double bedrooms are all of good proportions, the principal is set behind a striking sash bay window with beautifully preserved original Victorian pocket shutters, complimented by parquet flooring and ambient light features. The further two bedrooms have built-in wardrobes, cosy carpets, and neutral décor. A sleek modern bathroom with a luxurious walk-in rain shower completes this exquisite home.

Council tax band D    EPC rating D (67)

## Features

- Three double bedrooms
- Private South-facing garden
- End of terrace Victorian conversion
- Over 1,000 square feet of internal space
- Sought-after road equidistant to Brixton and Clapham High Streets
- Local amenities and eateries on the doorstep
- Short stroll to Brockwell Park
- Walking distance to Victoria and Northern tube lines
- Share of freehold





Lambert Road, Brixton, SW2

**Lambert Road, SW2**  
**3 Bedroom Flat**

APPROXIMATE GROSS INTERNAL AREA: 1001 SQ FT / 92.9 SQ M



While we try our very best, floor plans are produced as a guide only and we take no responsibility for the precise accuracy with which any property is represented.

Lambert Road, Brixton, SW2

