



Coldharbour Lane, Brixton, SW9

2 bedroom flat to let

£484 Per Week

Furnished

Property Details

Keating Estates are proud to present this lovely two bed flat set in a contemporary development located in a thriving and trendy residential area between Brixton and Loughborough Junction. This secure, modern development has the design team's signature architectural finish, attention to detail, while being engineered to meet all the requirements of modern living.

The master bedroom is a great size, the second bedroom is a good size and is versatile, it could be used as a guest room or as a home office. The living space is open plan with a large living area, room to dine and sleek modern kitchen, equipped with integrated appliances, the bathroom is a good size with a modern finish, the flat also benefits from private balcony and has access to a stunning communal roof terrace with views out over the neighbouring roof tops balconies the perfect entertaining space to enjoy the warmer months. Glass and natural light are a theme throughout this roomy apartment in the living area contribute to the bright and airy atmosphere throughout.

The flat is situated in a fantastic central location, a minutes' walk from Loughborough Junction station with access to Blackfriars, Farringdon and Kings Cross/St Pancras. Brixton is within a ten minute walk, perfect for anyone who wants to be close to the action, situated around the corner from the heart of Brixton's cultural hub - The Ritzy, Brixton Village, POP Brixton and Windrush Square all within reach. Brockwell Park is a short distance and the amenities within Herne Hill are fourteen minutes away.

Features

- Two bed
- Balcony
- Central location
- Bright and airy throughout
- Contemporary kitchen with integrated appliances
- Close to transport links
- Secure modern development
- Private roof terrace

Council tax band C EPC rating B (82)



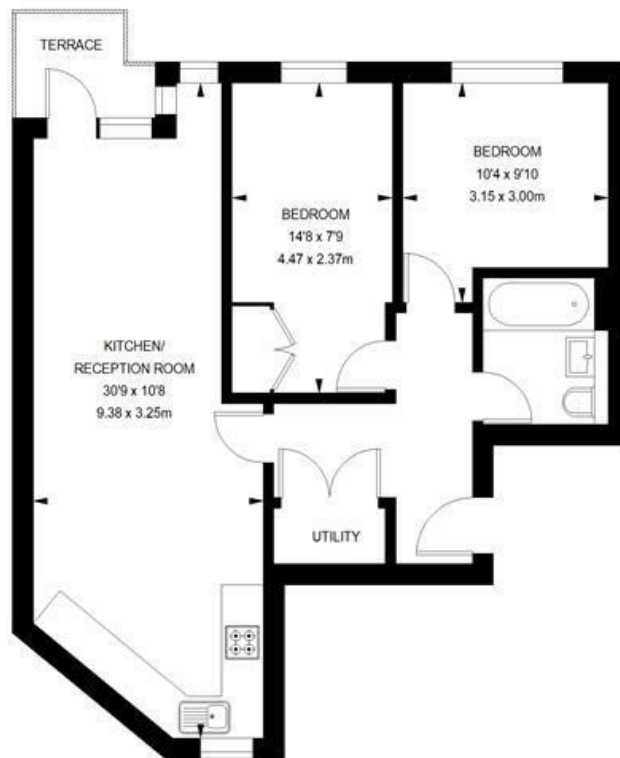
Coldharbour Lane, Brixton, SW9

Coldharbour Lane, SW9

2 bedroom flat

APPROXIMATE GROSS INTERNAL AREA WITH STORAGE:

624 SQ FT / 57.97 SQ M



SECOND FLOOR



While we try our very best, floor plans are produced as a guide only and we take no responsibility for the precise accuracy with which any property is represented.

Coldharbour Lane, Brixton, SW9

