

Elm Park, Brixton, SW2

1 bedroom flat - conversion for sale

Leasehold

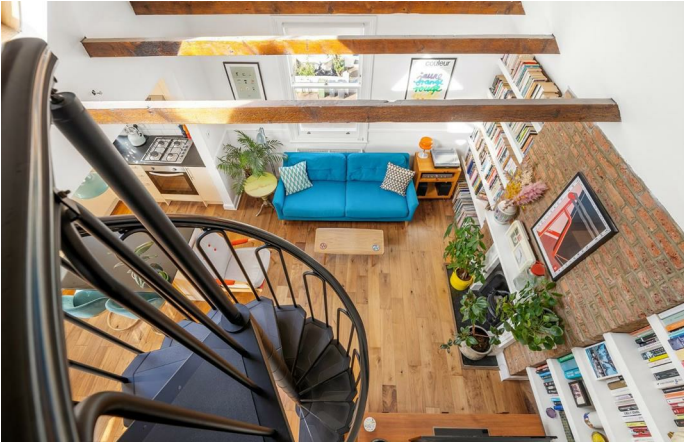
Property Details

A fantastic loft-style Victorian apartment with a private terrace boasting city views. The impeccable open-plan reception is bursting with impact including double-height, vaulted ceilings with original beams. This wonderful space is bathed in natural light through dual aspect windows creating a bright and spacious ambience. The high-spec kitchen has modern cabinetry, granite work surfaces and an island adding to the sociable vibe, with generous proportions still on offer for a dining table. The bedroom is a comfortable double with a wall of fitted wardrobes. Renovated to a high standard, the bathroom is beautifully finished with a luxurious walk-in rain shower. A striking spiral staircase leads to the mezzanine, this versatile space is currently a study with a quiet reading nook, however the space has been used as a second bedroom in the past. This charming space is complete with built-in storage and access out to the terrace. Featuring unobstructed views of the city skyline this fantastic terrace is the perfect spot to watch the sun set, turning to twinkling city lights as night falls. With a new roof below just two years ago, the terrace is laid to deck and partially sheltered by a wall for those cooler days. Early registration of interest advised.

Features

- One double bedroom plus mezzanine room
- Private terrace with city views
- End of terrace Victorian conversion
- Lofty, vaulted ceilings
- Packed full of character
- High-spec kitchen and bathroom
- Bright airy with dual aspect windows
- Local pub, cafe, shop and bakery
- Central Brixton a twenty-minute stroll or short bus ride
- Close to Brockwell Park

Council tax band C EPC rating D (56)

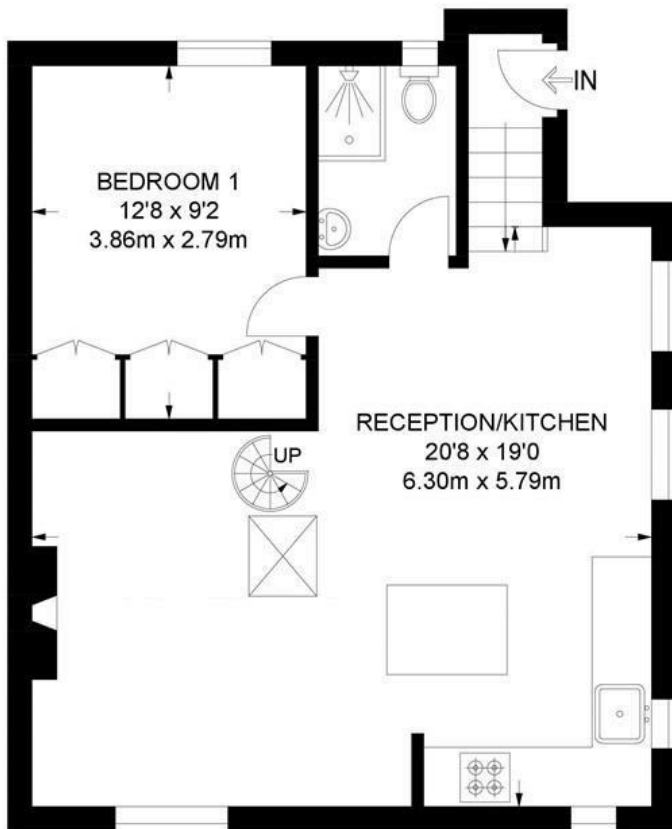




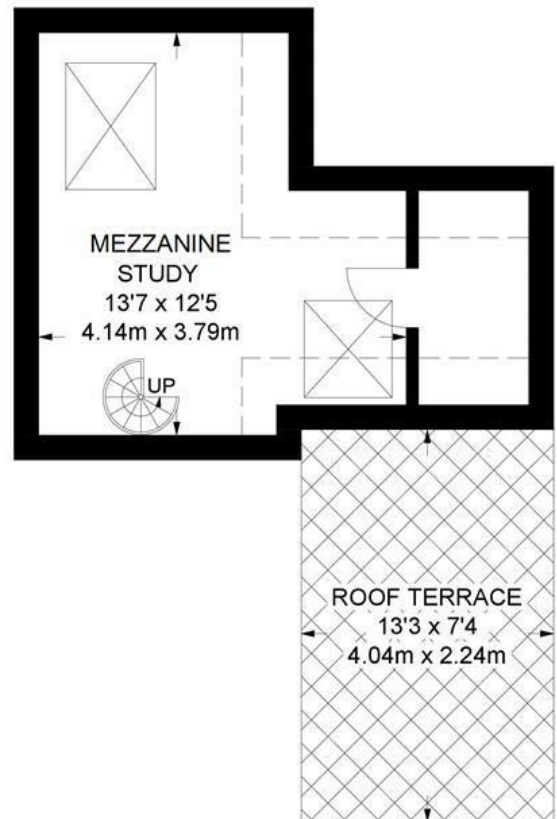
Elm Park, Brixton, SW2

Elm Park, SW2
1 Bedroom Flat

APPROXIMATE GROSS INTERNAL AREA: **665 SQ FT / 61.8 SQ M**



SECOND FLOOR



THIRD FLOOR



While we try our very best, floor plans are produced as a guide only and we take no responsibility for the precise accuracy with which any property is represented.

Elm Park, Brixton, SW2

