



Thornbury Road, Brixton, SW2

5 bedroom house to let

£1,211 Per Week

Furnished

Property Details

A beautiful five double bedroom house situated a short distance from central Brixton and Clapham Common. The house features a double aspect reception room & a stunning eat-in kitchen diner with french doors that open straight into the lovely garden. On the first floor are three double bedrooms, a shower room and a WC. On the second floor are two more double bedrooms and a family bathroom. The property is a short walk from cafés, restaurants and local pubs of Brixton Hill. Brixton tube station is also within walking distance of the property gaining you access to the first stop on the Victoria Line.

Features

- Five double bedrooms
- Two bathrooms and a WC
- Double aspect reception
- Eat in kitchen/diner
- Garden
- Cellar
- Newly refurbished

Council tax band F EPC rating D (57)





Thornbury Road, Brixton, SW2

K

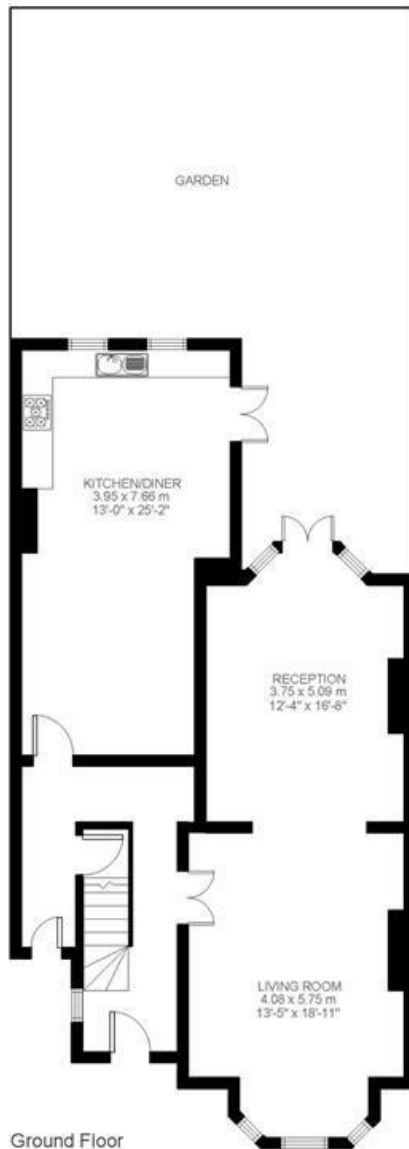
5 Bed house
Approx internal area:

2508 sqft 233 sqm

While we do try our very best, floor plans are produced as a guide only and we take no responsibility for the precise accuracy with which any property is represented



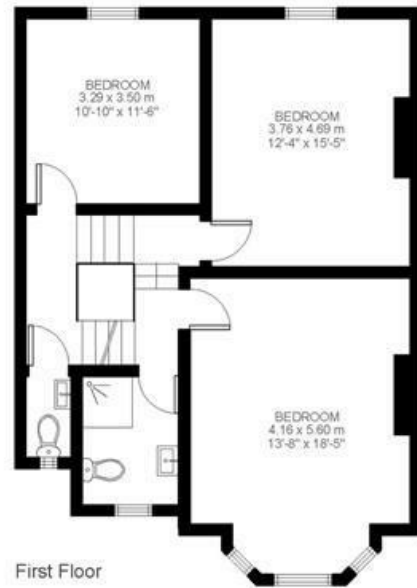
Basement



Ground Floor



Thornbury Road



First Floor



Second Floor

Thornbury Road, Brixton, SW2

