



Corrance Road, SW2

1 bedroom flat - conversion to let

£420 Per Week

Furnished

Property Details

Keating Estates are proud to present to market this charming split level one bedroom flat on Corrance Road, a desirable and neighbourly street conveniently located close to the amenities of Brixton set over the top floor of a Victorian terrace.

Forming the heart of the home, an open-plan reception room is bathed in natural light from dual-aspect skylights, neutrally decorated and offering dimensions to lounge, dine and entertain. A high spec and modern integrated kitchen offers ample storage space and surface. Quietly nestled to the rear of the property, the bedroom is a large double with space for sizeable wardrobe whilst still allowing room for additional storage options. Neutrally decorated, the perfect bedroom in which to relax, with a large window overlooking the gardens below. This lovely flat is completed by a neutral bathroom with fittings including both shower and bath.

Nestled in a leafy part of vibrant and thriving Brixton, Situated an eight minute stroll to all that central Brixton has to offer, living here you will have the popular establishments on Brixton Hill and Acre Lane are within touching distance, including F Mondays, Stir Coffee, Pizza Brixton and the Naughty Piglets and two supermarkets. This appealing flat is ideal for anyone who wants to be close to the action whilst maintaining a sense of calm. You will have the best of both worlds with everything on offer in the hustle and bustle of central Brixton. The First stop on the Victoria Line, Brixton tube station is a stroll

Features

- One Double bedroom
- Split level
- Open plan
- Modern
- Close to transport links
- Close to Central Brixton

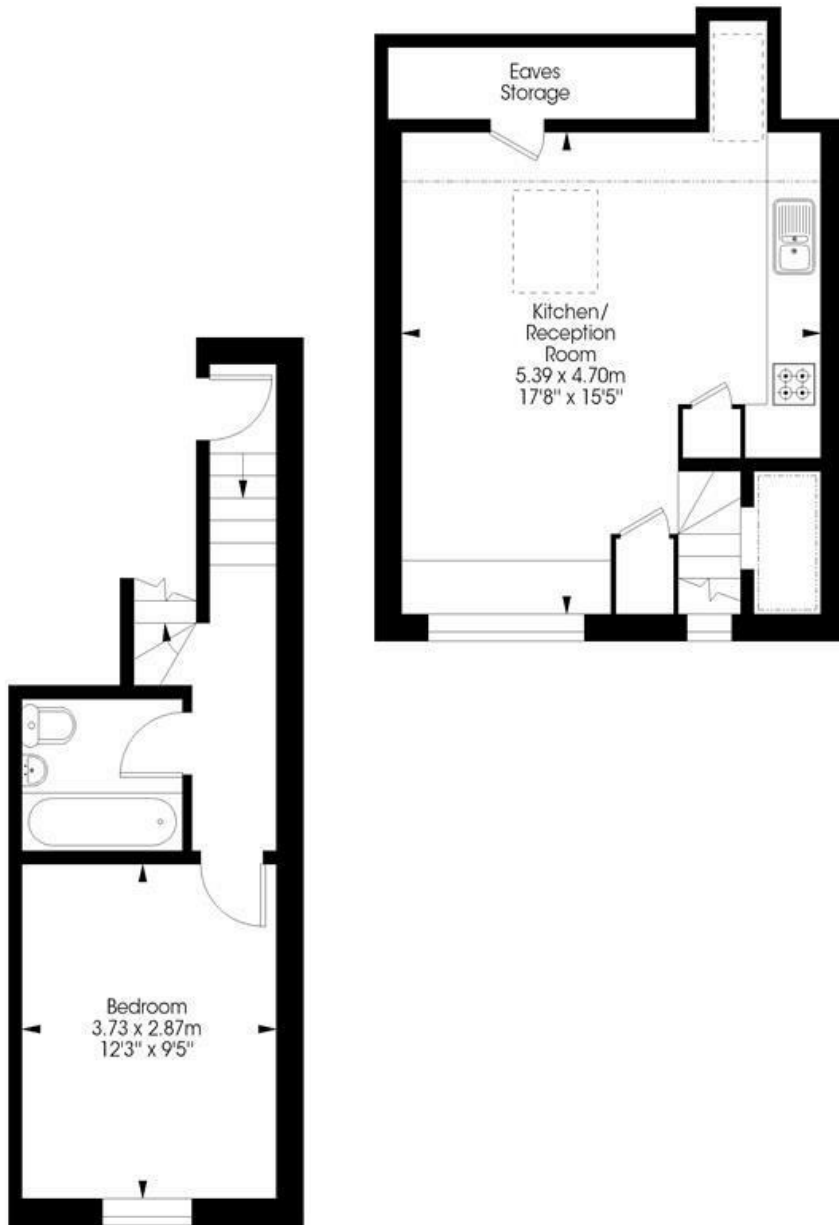
Council tax band B EPC rating D (68)



Corrance Road, SW2

Corrance Road, SW2
1 bedroom flat

Approximate internal area: **532 sqft / 49.4 sqm**



Second Floor

Third Floor



While we try our very best, floor plans are produced as a guide only and we take no responsibility for the precise accuracy with which any property is represented.

Corrance Road, SW2

