

Raleigh Gardens, Brixton, SW2

2 bedroom flat - conversion for sale

£575,000

Share of Freehold

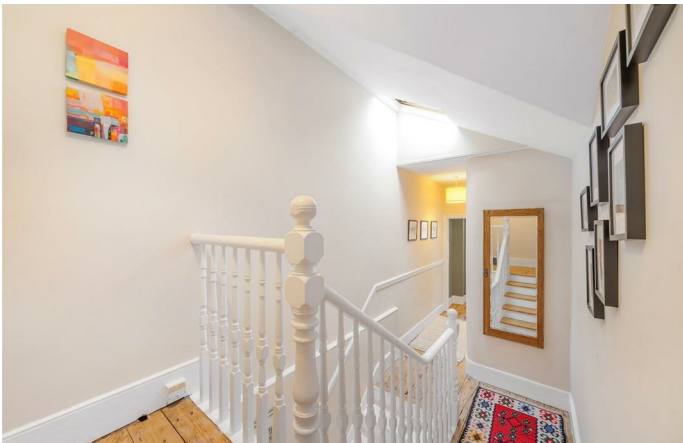
Property Details

A wonderful two double bedroom apartment with a communal garden and off-street parking, within an attractive Victorian property. This stunning top floor apartment is a fantastic example of what can be done when one of these majestic townhouses is refurbished with care and attention to detail. Set on the unique Raleigh Gardens, a desirable and leafy residential road tucked away off Brixton Hill, the property benefits from a quiet setting as the entrance is a no-through road which only allows access to these particular houses. This lovely flat has been renovated to a high standard throughout and benefits from an abundance of natural light. The open-plan reception room at the front of the house is a beautiful room - the contemporary kitchen is sleek and stylish, boasting everything you need in terms of appliances and storage, plus a convenient breakfast bar. The two double bedrooms are both a good size, each benefitting from bespoke built-in wardrobes and separated for privacy. A tasteful, modern bathroom separates the bedrooms, equipped with a bathtub plus overhead shower. The flat benefits from off-street parking and access to a front communal lawned garden.

Features

- Two double bedrooms
- Communal front garden
- Off-street parking
- Victorian conversion
- Beautifully presented throughout
- Bright and airy
- Sought-after street set back quietly off Brixton Hill
- Local amenities on the doorstep
- Short walk to central Brixton and the Tube
- Share of freehold and chain-free

Council tax band C EPC rating D (58)



Raleigh Gardens, Brixton, SW2

Raleigh Gardens, SW2
2 Bedroom Flat

APPROXIMATE GROSS INTERNAL AREA: 778 SQ FT / 72.3 SQ M



While we try our very best, floor plans are produced as a guide only and we take no responsibility for the precise accuracy with which any property is represented.

Raleigh Gardens, Brixton, SW2

