**Leander Road, Brixton, SW2**

2 bedroom flat to let

£475 Per Week

Furnished

Property Details

This two bedroom ground floor garden flat has two good size double bedrooms, an open living space large enough to have dining, the wooden floors and spot lighting give this property a modern feel. The property is about a twelve minute walk from Brixton, South London's new culinary mecca, with all it has to offer in terms of nightlife. It is also a five minute walk from what many local residents regard as London's best public space, Brockwell Park; In short, a beautiful building on a sought after street in this area close to the action but far enough away to offer a calm and sleepy feel.

Features

- Two double bedrooms
- Modern family bathroom
- Open plan living area and kitchen
- Private garden
- Bright and airy
- Close to Brockwell Park

Council tax band D EPC rating B (81)





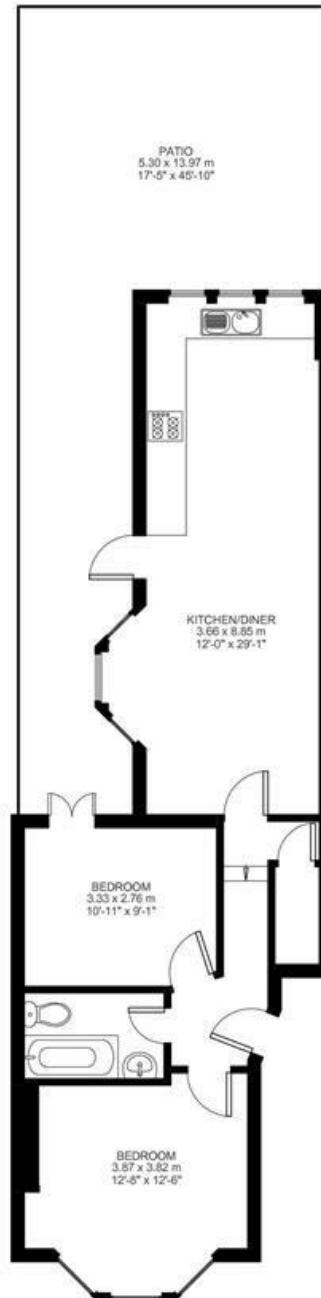
2 Bed flat

Approx internal area:

652 sqft 61 sqm

While we do try our very best, floor plans are produced as a guide only and we take no responsibility for the precise accuracy with which any property is represented

Leander Road



Ground Floor



Leander Road, Brixton, SW2

