



Leander Road, Brixton, SW2

2 bedroom flat - conversion for sale

£435,000

Share of Freehold

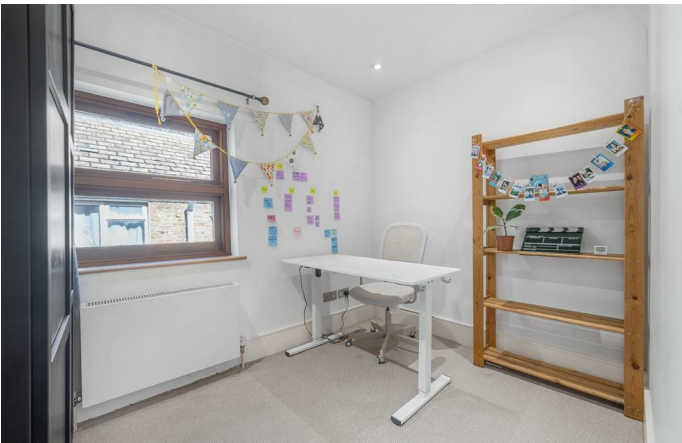
Property Details

An appealing two bedroom Victorian apartment within the Josephine Conservation area with an array of local amenities. This versatile property boasts a bright and private ambience throughout, enhanced by large windows. The fantastic open plan reception measures over six meters in length with ample proportions for both a lounge and dining area. A floor-to-ceiling window bathes the space in natural light, with leafy views. The integrated kitchen provides worktop and storage space within sleek cabinetry, wrapping around to create a pleasant place to cook, with a sink under the large skylight. Stairs lead to the bedrooms, adding to the homely feel and providing a level of separation. Quietly set to the rear, both bedrooms are neutrally presented with carpets for a warming feel. The principal is particularly appealing, a comfortable double with an attractive floor-to ceiling square bay window. A versatile room, the second bedroom is currently a spacious home office, previously dressed with a double bed and easily repurposed to suit needs. Boasting another large skylight, the contemporary bathroom is equipped with a double-ended bathtub plus overhead shower. A cupboard in the hall provides storage.

Council tax band C EPC rating D (61)

Features

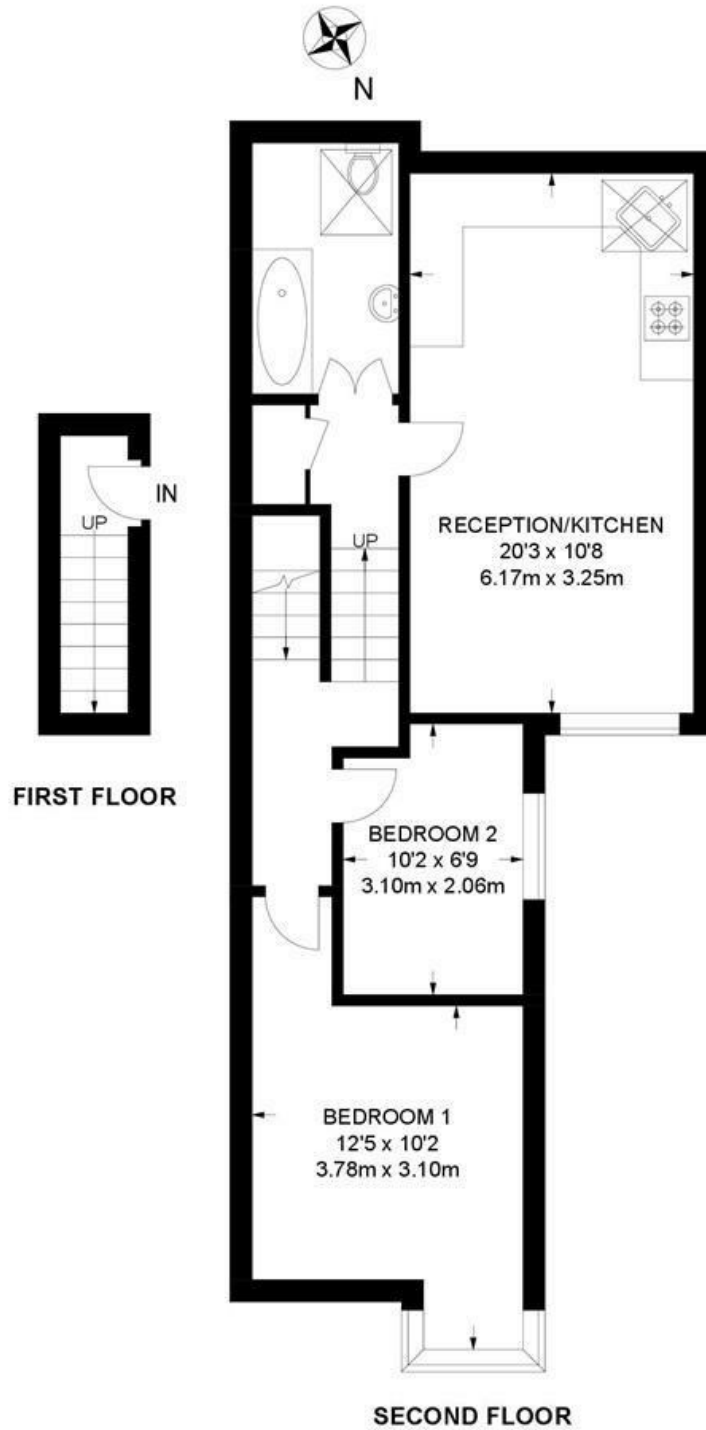
- Two bedrooms
- Victorian conversion
- Sought-after road with annual party
- Bright and airy throughout
- Central Brixton a fourteen-minute walk
- Brockwell Park a five-minute walk
- Herne Hill a ten-minute stroll through the park
- Large brand supermarket in five minutes
- Share of freehold
- Chain-free



Leander Road, Brixton, SW2

Leander Road, SW2
2 Bedroom Flat

APPROXIMATE GROSS INTERNAL AREA: **581 SQ FT / 54 SQ M**



While we try our very best, floor plans are produced as a guide only and we take no responsibility for the precise accuracy with which any property is represented.

Leander Road, Brixton, SW2

