

Strathleven Road, Brixton, SW2

2 bedroom flat - conversion for sale

£600,000

Share of Freehold

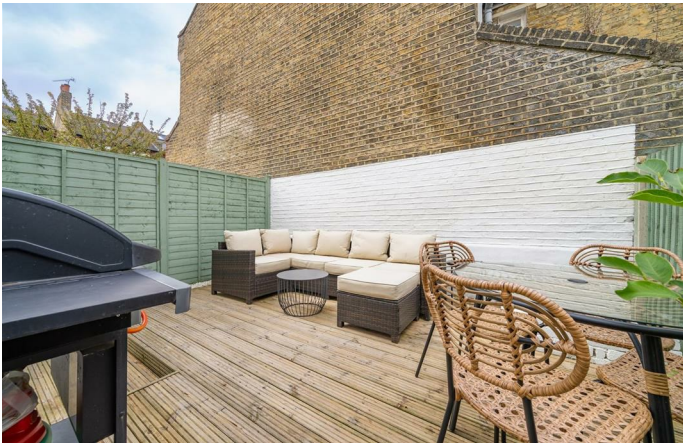
Property Details

An attractive two bedroom garden flat in an excellent location, upgraded with thoughtful touches such as re-decorations and thermostats added to the radiators for efficient temperature control. The spacious reception is bathed in sunlight from a large square bay window, dressed with plantation shutters that offer privacy whilst still permitting the light to flow. A separate dine-in kitchen is well-laid out, neatly integrating appliances with space for a dining table and worktop lighting to set the mood. A bespoke hall cupboard provides additional storage, just one of the details which elevate the appeal of this home. The garden is an afternoon sun-trap, accessed from both kitchen and bedroom with the configuration of the surrounding buildings ensuring a particularly private outside space. The generous principal bedroom has a peaceful atmosphere enhanced by good insulation and soundproofing. Ideal for sharers, the second bedroom sits separately, a versatile space currently a guest room and tranquil home office with French doors to the garden. The stylish bathroom has a luxurious double-ended bathtub with rain shower overhead. Precedent has been set should the purchaser wish to seek permissions to extend in the future.

Council tax band D EPC rating D (67)

Features

- Two bedrooms
- Private garden
- Victorian conversion
- Beautifully presented with thoughtful attention to detail
- Potential to extend STNP
- Local amenities and eateries on the doorstep
- Equidistant between Clapham and Brixton
- Northern and Victoria Lines, Overground and Trains
- Share of freehold

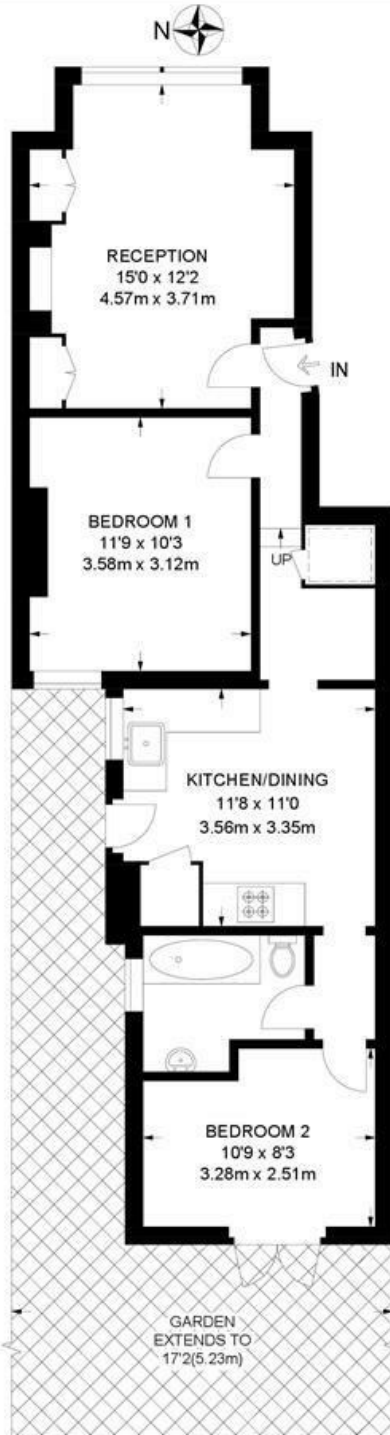




Strathleven Road, Brixton, SW2

Strathleven Road, SW2
2 Bedroom Flat

APPROXIMATE GROSS INTERNAL AREA: 637 SQ FT / 59.2 SQ M



GROUND FLOOR



While we try our very best, floor plans are produced as a guide only and we take no responsibility for the precise accuracy with which any property is represented.

Strathleven Road, Brixton, SW2

