



Endlesham Road, Balham, SW12

2 bedroom flat - conversion to let

£553 Per Week

Furnished

Property Details

Keating Estates are proud to present to market a fantastic two double bedroom garden flat set within a lovely period conversion, perfectly positioned within close proximity to all that Balham has to offer.

The open plan reception is spacious and the modern kitchen is tastefully finished and has ample space for a dining table. Doors open up onto the side return to the low-maintenance private patio is the icing on the cake - ideal for winding down throughout the warmer months. Peacefully nestled away from the street, the principal bedroom is a large double and benefits from an en-suite, this lovely room has a calming ambience created by stylish décor. Still a genuine double, the second bedroom is separated from the principal towards the front of the property ideal for couples or single occupants requiring a guest room or a serene home office. Completing the interior, the neutral bathroom is set in a central position for best serving all rooms, equipped with a bathtub and overhead shower. Ideal for a soak in the bubbles after a jog around the Common.

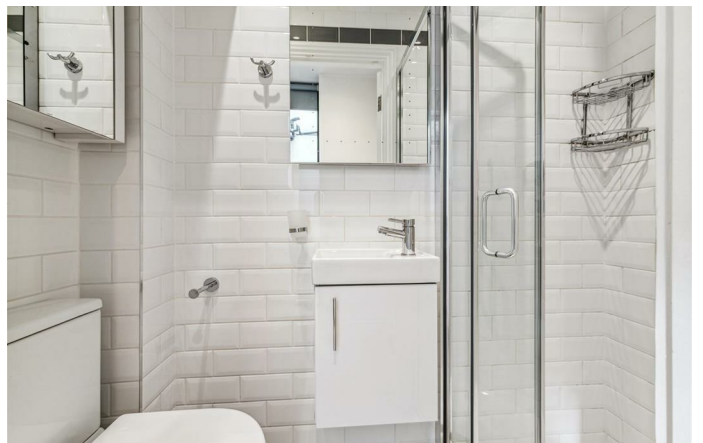
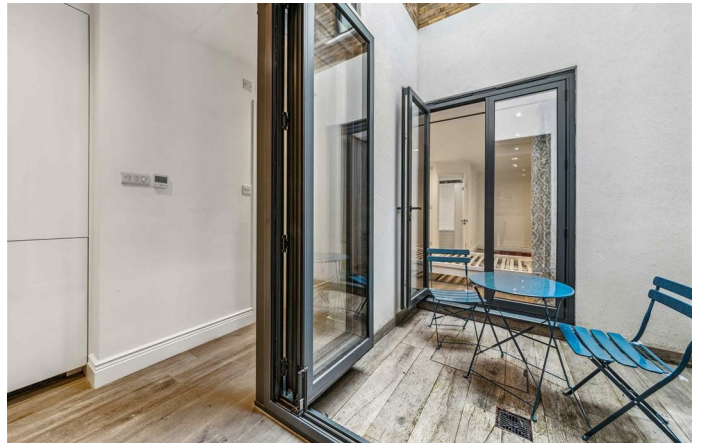
The location is brilliant, conveniently set at the top Endlesham Road with Wandsworth Common a short walk away, providing a peaceful retreat from the bustle of city life, this expansive green space is perfect for leisurely walks, picnics, and outdoor activities.

Features

- Two bedroom
- Two bathroom
- Open plan reception
- Patio
- Prime location
- Close to Balham High Street

Council tax band

EPC rating C (70)



Endlesham Road, Balham, SW12

Endlesham Road, SW10

2 bedroom flat

APPROXIMATE GROSS INTERNAL AREA WITH STORAGE:

699 SQ FT / 64.94 SQ M

APPROXIMATE GROSS INTERNAL AREA WITHOUT STORAGE:

668 SQ FT / 62.06 SQ M



LOWER GROUND FLOOR



While we try our very best, floor plans are produced as a guide only and we take no responsibility for the precise accuracy with which any property is represented.

Endlesham Road, Balham, SW12

