

Milles Square, Brixton, SW9

2 bedroom flat - purpose built for sale

£550,000

Leasehold

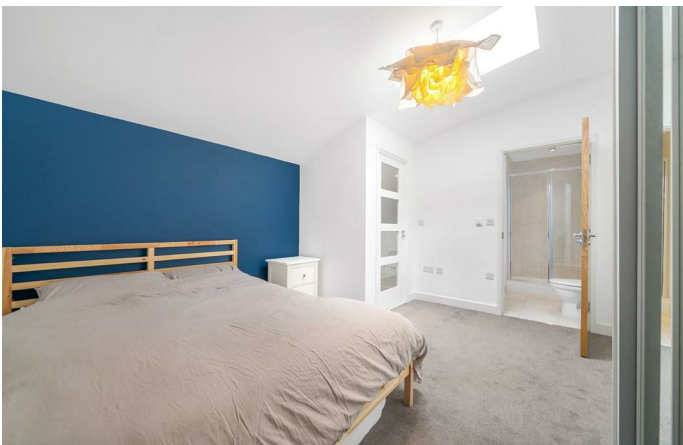
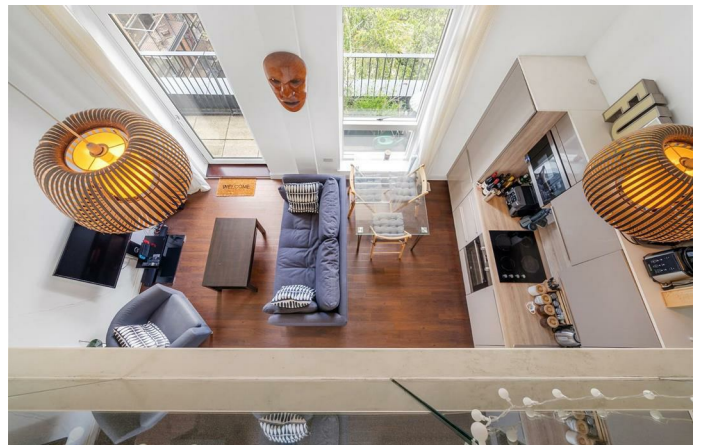
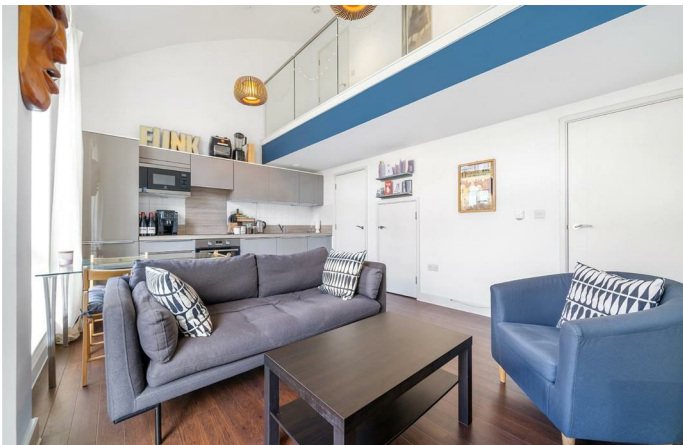
Property Details

A rare two double bedroom, two bathroom duplex with a full width terrace in a luxury development in the heart of Brixton. Its position overlooking a central courtyard offers a peaceful respite from the outside world. One of only a few duplexes in the building the home has fantastic proportions, with every room feeling airy and comfortable. The open plan reception is bathed in light from floor to ceiling windows, a sociable space with room to lounge, dine and cook under double height ceilings. The contemporary kitchen is integrated within sleek cabinetry with a utility room housing the washer/dryer and mod cons. Glass doors open to a private terrace, spanning the width of the home and wrapping around to a seating area perfect for dining al-fresco. Adjacent is the second of the double bedrooms with large-pane windows, lofty ceilings and fitted wardrobes. Conveniently set next to the second bedroom, the main bathroom has a bath with overhead shower. Completing this floor, a large cupboard under the stairs. Upstairs, there is a further utility room, whilst the principal bedroom suite occupies the remainder of the floor accessed via the stylish mezzanine balcony. A spacious room with a skylight plus fitted wardrobes and an en suite shower room.

Council tax band E EPC rating (0)

Features

- Two double bedrooms
- Two bathrooms
- Private terrace spanning width of the apartment
- Secure modern duplex
- Split over two floors
- Bright and airy
- Well-maintained communal grounds
- Concierge, lift and bike storage
- Central Brixton moments from Brixton Village
- Short walk to Brixton tube station

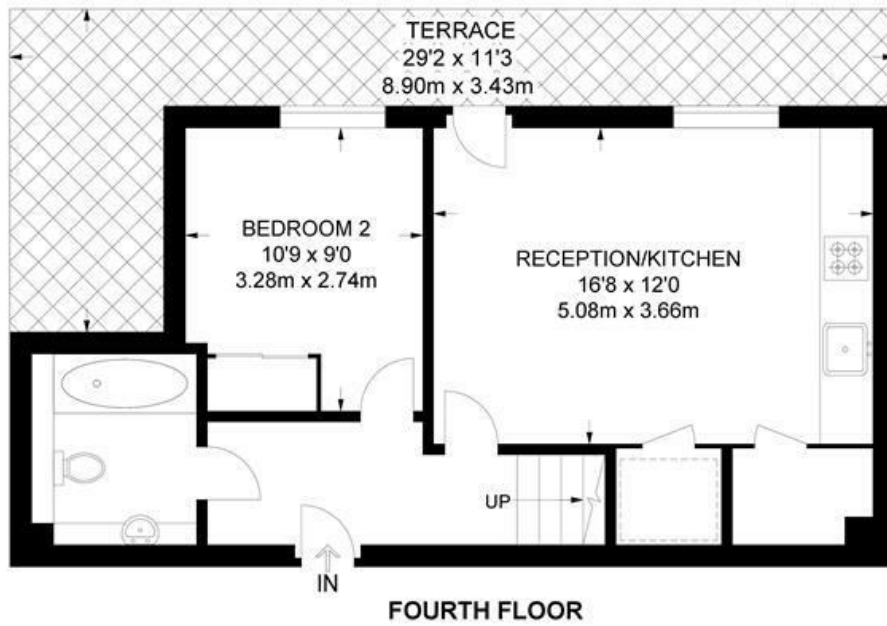




Milles Square, Brixton, SW9

Milles Square, SW9
2 Bedroom Flat

APPROXIMATE GROSS INTERNAL AREA: 770 SQ FT / 71.5 SQ M (EXCLUDING VOID)



While we try our very best, floor plans are produced as a guide only and we take no responsibility for the precise accuracy with which any property is represented.

Milles Square, Brixton, SW9

