



**Fitzwilliam Road, Clapham, SW4**

2 bedroom maisonette for sale

**£850,000**

Share of Freehold

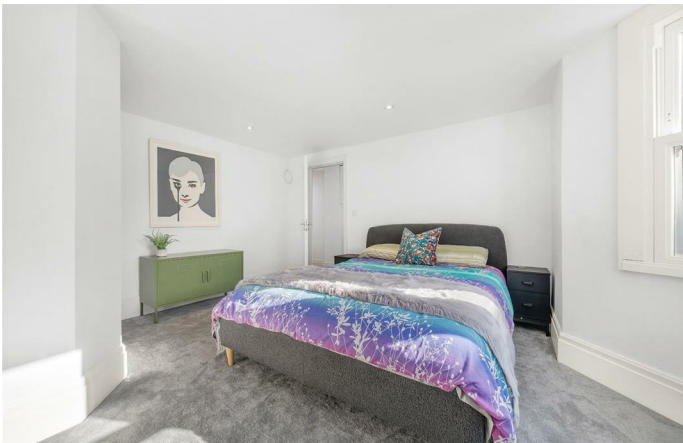
## Property Details

An immaculately refurbished two double bedroom, two bathroom garden flat with a garden studio. This large apartment has its own private entrance and is split over two floors of a Victorian townhouse within the sought-after Clapham Old Town. An expansive reception is bathed in light through large sash windows with high ceilings and contemporary flooring. The dine-in kitchen has integrated appliances within sleek cabinetry boasting generous storage and plentiful worktops with garden views. The landscaped garden has two paved seating terraces with a grassy lawn stretching between. Nestled at the rear, a versatile garden room has electricity and heating. Stairs lead to the two double bedrooms with a tranquil setting and similar proportions, ideal for sharers. The principal boasts the luxury of an en-suite. Conveniently set next to the second bedroom, the main bathroom has a bathtub below the window. Of further benefit, there are three storage cupboards for those lesser used yet essential belongings. This elegant flat will appeal to a wide range of purchasers.

Council tax band E    EPC rating C (69)

## Features

- Two double bedrooms
- Two bathrooms
- Landscaped private garden
- Garden room with electricity and heating
- Victorian maisonette
- Own private entrance
- Over 1,000 square feet
- Fully and tastefully refurbished
- Desirable location in Clapham Old Town
- Share of freehold. Chain-free



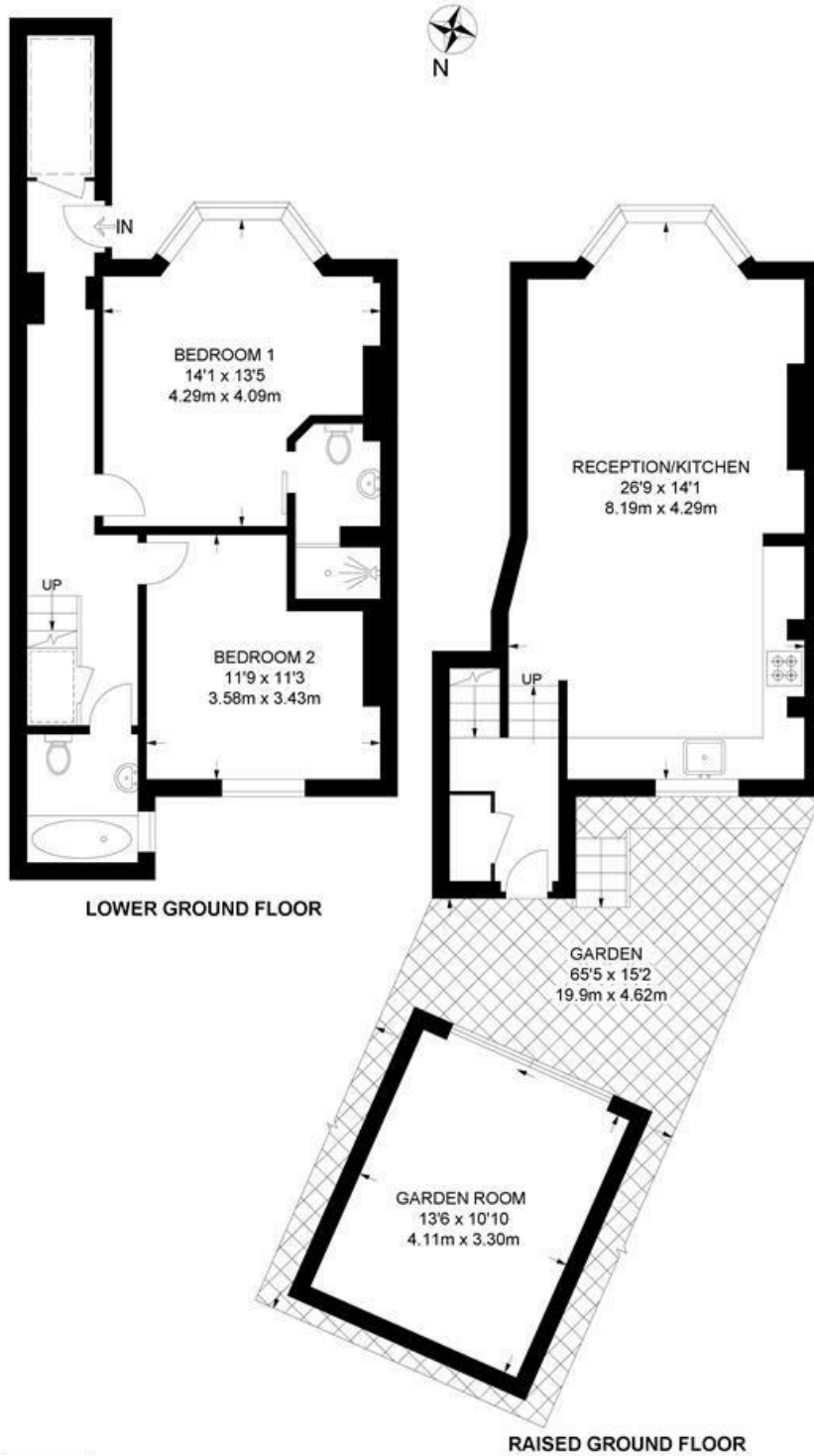


Fitzwilliam Road, Clapham, SW4

**Fitzwilliam Road, SW4**  
**2 Bedroom Maisonette**

APPROXIMATE GROSS INTERNAL AREA WITH OUTBUILDING: **1018 SQ FT / 94.6 SQ M**

APPROXIMATE GROSS INTERNAL AREA WITHOUT OUTBUILDING: **872 SQ FT / 81 SQ M**



While we try our very best, floor plans are produced as a guide only and we take no responsibility for the precise accuracy with which any property is represented.

Fitzwilliam Road, Clapham, SW4

