



Hayter Road, Brixton, SW2

2 bedroom flat - conversion for sale

£725,000

Share of Freehold

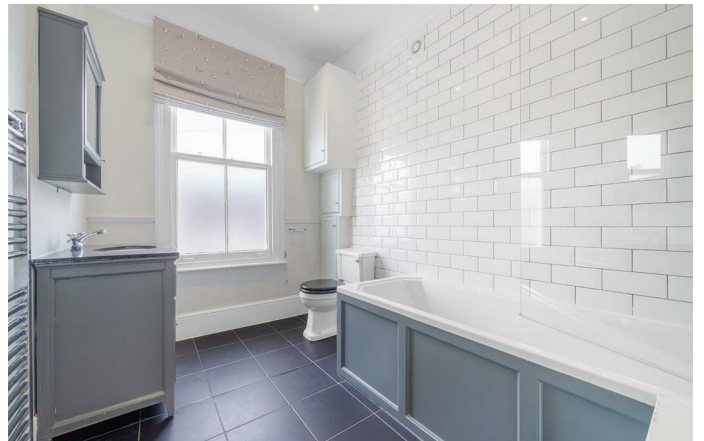
Property Details

A split-level two bedroom South-facing garden flat, set within an attractive period property within the catchment areas of Sudbourne and Corpus Christi schools. This spacious maisonette feels like home from the moment you step through the private entrance. The reception has generous proportions in which to unwind and dine, with characterful grandeur and feature fireplace. The separate kitchen wraps around two walls to provide plentiful storage and surfaces, plus room for a table. Overlooking the terrace and garden this is a lovely place to cook. South-facing the terrace and garden are wonderful low-maintenance sun-traps connected via a charming iron staircase, the perfect escape from city life. Both bedrooms are spacious doubles with fitted wardrobes and original fireplaces, set to differing floors for a desirable level of privacy. Like the rest of the home, the bathroom is spacious and well-presented, with an additional WC on the first landing. There is copious storage in the demised loft, with the potential to convert subject to permissions.

Council tax band D EPC rating (0)

Features

- Two double bedrooms
- Bathroom plus a separate WC
- South facing private garden and balcony
- Victorian conversion
- Split-level
- Characterful features
- Potential to extend STNP
- Sought-after residential street between Brixton and Clapham High Streets
- Share of freehold





Hayter Road, Brixton, SW2

Hayter Road, SW2
2 Bedroom Flat

APPROXIMATE GROSS INTERNAL AREA WITH LOFT: **1475 SQ FT / 137 SQ M**

APPROXIMATE GROSS INTERNAL AREA WITHOUT LOFT: **892 SQ FT / 82.9 SQ M**



While we try our very best, floor plans are produced as a guide only and we take no responsibility for the precise accuracy with which any property is represented.

Hayter Road, Brixton, SW2

