



Flaxman Road, Brixton, SE5

4 bedroom maisonette for sale

Share of Freehold

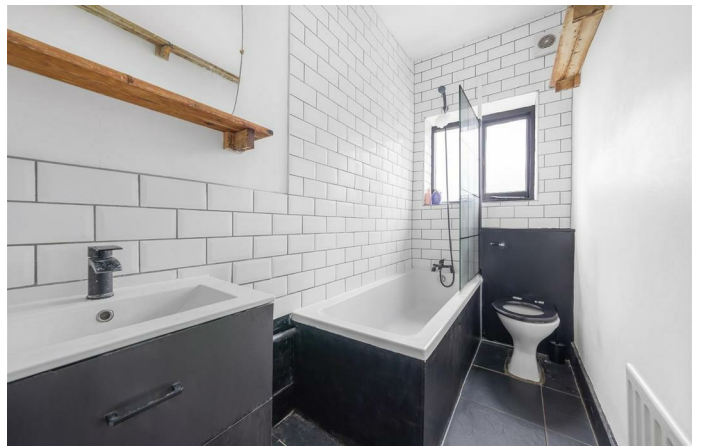
Property Details

Over 1,420 square feet, an incredibly spacious four bedroom, split-level maisonette, arranged over the top floors of a charming period townhouse, perfectly located for easy access to both central Brixton and Camberwell, a two minute walk from Loughborough Junction station with Ruskin Park a few minutes away. To the front of the property, benefiting from large sash windows is a spacious reception room spanning the width of the property and brimming with characterful charm. The kitchen is adjacent, offering the opportunity to combine the two (subject to the necessary permissions), complete with trendy butler sink and recently replaced washing machine and fridge. Completing the first floor is the family bathroom, furnished with bath and shower and chic Moroccan style basin. The upper floors of this charming property provide four double bedrooms, three of the bedrooms are arranged over the second floor, two of which are particularly generous in size, with the third still being a genuine double. Additional storage is available on this floor in the form of a hallway cupboard. The fourth bedroom is nestled on the upper floor with exposed brickwork, skylights and access to eaves storage.

Council tax band D EPC rating D (59)

Features

- Four bedrooms
- Period maisonette
- Private entrance
- Over 1,420 square feet of internal space
- Split-level
- Minutes from Ruskin Park
- Close walking distance to the station
- Access to Brixton, Camberwell and Herne Hill
- Share of freehold
- Chain-free



Flaxman Road, Brixton, SE5

Flaxman Road,
Loughborough Junction, SE5
4 bedroom flat

Approximate internal area:
(Including Eaves Storage)
Eaves Storage area:

1421 sqft / 132 sqm

237 sqft / 22 sqm



While we try our very best, floor plans are produced as a guide only and we take no responsibility for the precise accuracy with which any property is represented.



Flaxman Road, Brixton, SE5

