



Bellefields Road, Brixton, SW9

2 bedroom maisonette for sale

£675,000

Share of Freehold

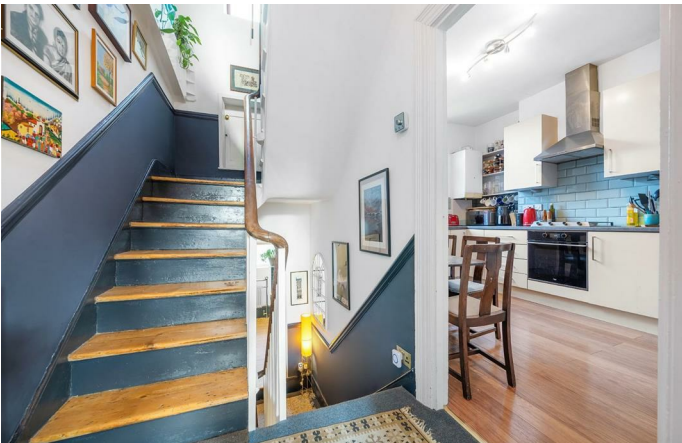
Property Details

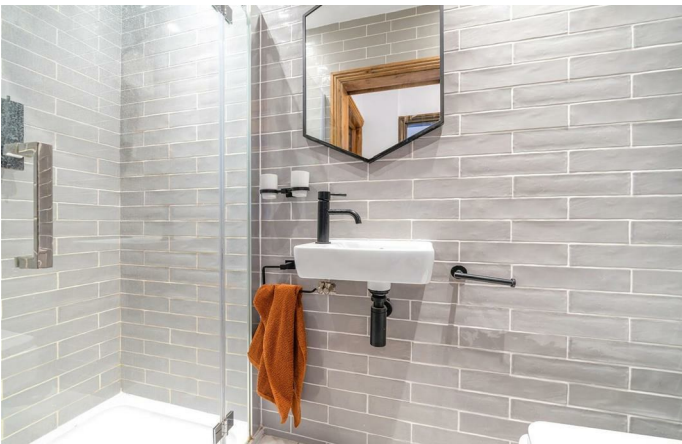
A characterful split level, two bedroom Victorian maisonette with a roof terrace and private entrance in the heart of Brixton within the LTN. Lovingly cared for this wonderful home has undergone extensive renovations creating a beautiful home ready to move into hassle free. A bright reception boasts cornicing and arched sash windows, a capacious room with providing the perfect area in which to relax and entertain. Adjacent, the kitchen has sleek cabinetry, space for dining, worktop lighting and an ergonomic layout with leafy views. The main bathroom is equipped with a feature mirror, bathtub plus overhead shower and renovated with forest green tiles, new fittings, and charming wooden floor. Leading off the meandering staircase, is the fantastic terrace with Jasmine plants providing privacy, a new railing and new decking built to last. Upstairs, both bedrooms are generous doubles with wooden floors and fitted storage. A convenient second bathroom has a walk-in rain shower. Being split over the upper the floors, the home is private with an incredibly airy atmosphere. There is additional storage in the loft.

Council tax band C EPC rating C (69)

Features

- Two double bedrooms
- Private terrace
- Victorian conversion
- Split over the upper floors
- Private entrance
- Characterful features
- Sought after location
- Close to all that vibrant Brixton has to offer
- Victoria line at Brixton tube a four-minute stroll
- Share of freehold

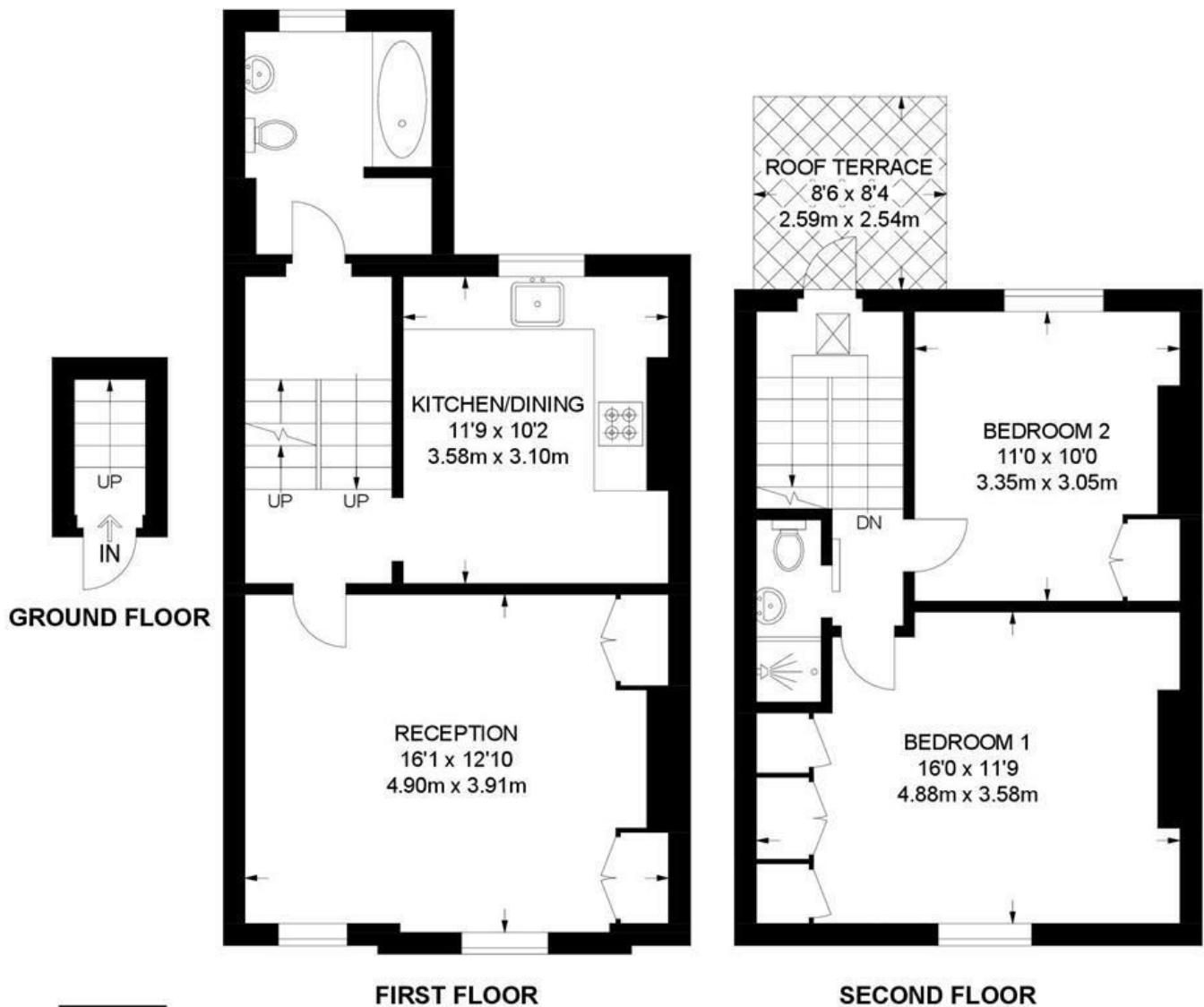




Bellefields Road, Brixton, SW9

Bellefields Road, SW9
2 Bedroom Flat

APPROXIMATE GROSS INTERNAL AREA: **849 SQ FT / 79 SQ M**



While we try our very best, floor plans are produced as a guide only and we take no responsibility for the precise accuracy with which any property is represented.

Bellefields Road, Brixton, SW9

