

**St Faith's Road, Tulse Hill, SE2 1**

2 bedroom flat - conversion for sale

**£475,000**

Share of Freehold

## Property Details

An immaculately presented two double bedroom flat on a neighbourly one-way street. The setting over the first floor lends itself to a particularly bright ambience, with high ceilings enhancing the airy feel. Ideal for hosting, the reception is a grand space with a sprawling bay window, wooden flooring and space for a dining area and comfortable lounge, ideal for cosy evenings unwinding in front of the working fireplace. With country-style in-frame cabinetry the kitchen has charming wooden worktops, plus a butler sink under the window and a sociable breakfast bar. The two bedrooms are both doubles with the principal being particularly spacious, tucked away at the rear with leafy views and triple glazed windows to promote a restful sleep. Still a genuine double the second bedroom is set to the opposing side of the home, allowing a desirable level of privacy for both. An attractive bathroom has a shower over the bath and there is also a lockable storage cupboard in the hallway outside the flat entrance plus lots of bike nests in the area.

## Features

- Two bedrooms
- Semi-detached Victorian conversion
- Working fireplace
- Characterful features
- Generous storage
- Bright and airy
- Beautifully presented
- Brockwell Park a short stroll away
- Four-minute walk to the station
- Share of freehold

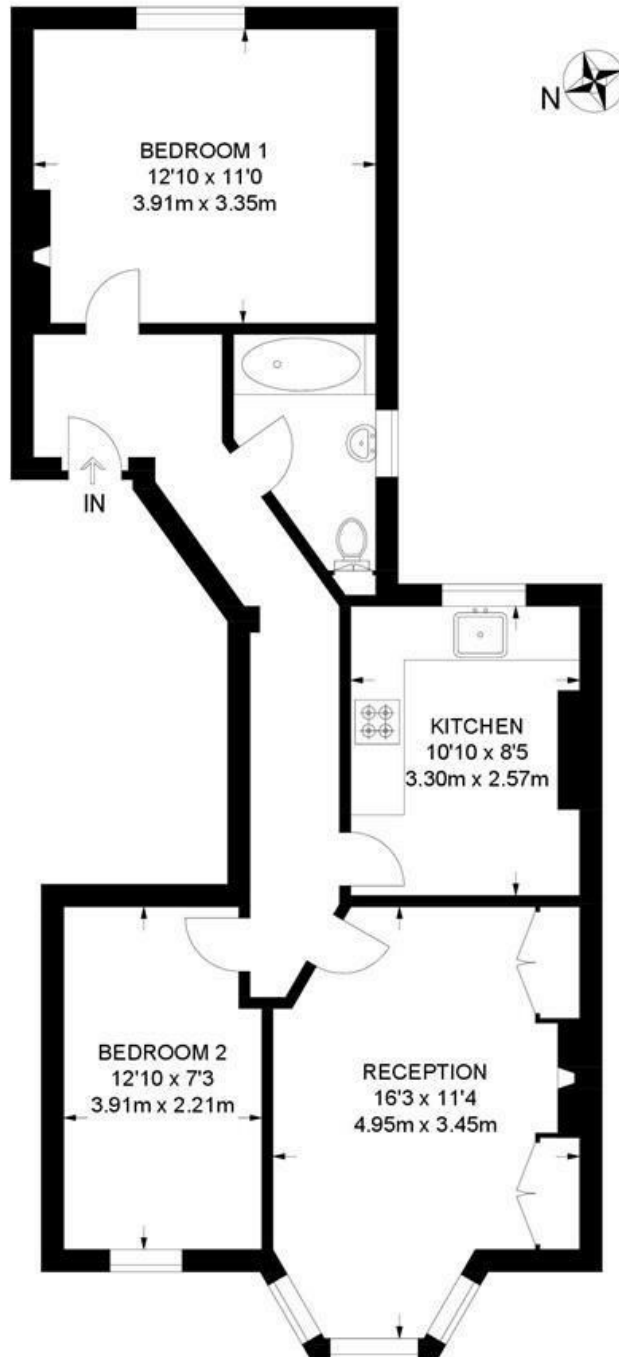
Council tax band C      EPC rating D (68)



St Faith's Road, Tulse Hill, SE21

**St Faiths Road, SE21**  
**2 Bedroom Flat**

APPROXIMATE GROSS INTERNAL AREA: **648 SQ FT / 60.2 SQ M**



**FIRST FLOOR**



While we try our very best, floor plans are produced as a guide only and we take no responsibility for the precise accuracy with which any property is represented.

St Faith's Road, Tulse Hill, SE21

