

Leander Road, Brixton, SW2

2 bedroom flat - conversion for sale

£450,000

Leasehold

Property Details

An alluring two bedroom Victorian apartment on a highly sought-after residential street with an annual street party. Spanning the width of the property is an inviting open-plan reception offering ample space to cook, dine and unwind, with modern flooring and a flurry of windows which flood the room in natural light. Neatly tucked to one side the kitchen runs along one wall, maximising the space. Neutral décor and modern down lighting make this hub of the home the ideal place to entertain. A considerate layout ensures that both bedrooms are peacefully nestled away from the street with leafy views over the neighbouring gardens. Both bedrooms are well-proportioned and separated from one another to allow a level of privacy, making this appealing home perfect for sharers and those wishing to rent out a room. The bathroom is neutrally decorated, with a bathtub and shower above. A complete blank canvas, the apartment is ready to move into straight away yet with the potential to add your own decorative touches over time. A share of the freehold will be granted upon the sale of the final flat in the building.

Features

- Two bedrooms
- Victorian conversion
- Sought-after residential street
- Brixton and the Victoria line in strolling distance
- Brockwell Park a four-minute walk
- Herne Hill a ten-minute walk through the park
- Large brand supermarket nearby
- Chain-free
- Share of freehold will be granted

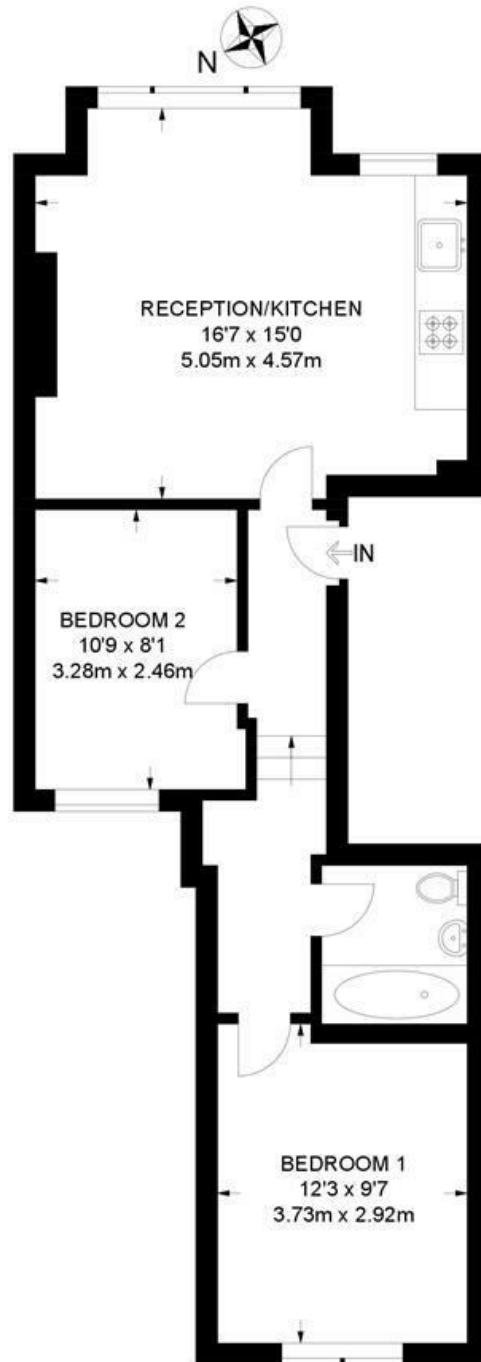
Council tax band D EPC rating C (73)



Leander Road, Brixton, SW2

Leander Road, SW2
2 Bedroom Flat

APPROXIMATE GROSS INTERNAL AREA: **537 SQ FT / 50 SQ M**



FIRST FLOOR



While we try our very best, floor plans are produced as a guide only and we take no responsibility for the precise accuracy with which any property is represented.

Leander Road, Brixton, SW2

