



**Acre Lane, Brixton, SW2**

4 bedroom flat to let

**£800 Per Week**

Furnished

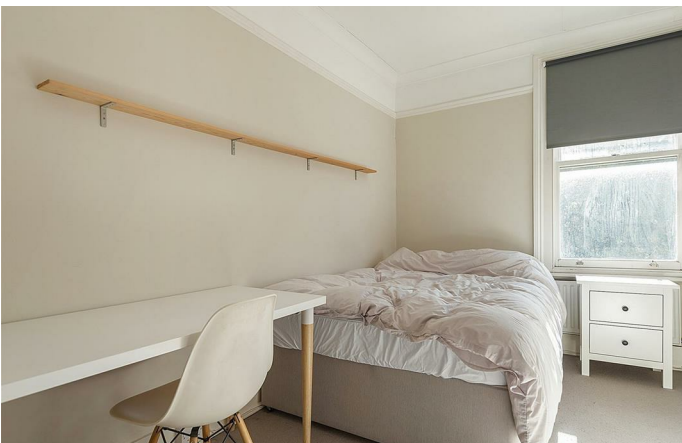
## Property Details

This huge four bedroom split level apartment is slap bang in the middle of Clapham and Brixton giving you fantastic options with transport, shops, parks and awesome night life. This four bed is generously sized and beautifully presented in excellent condition. The property boasts an large living room with loads of natural light, a striking separate modern kitchen, family sized bathroom and four good sized double bedrooms. In one direction is Clapham High Street and the green open spaces of the Common, as well as access to the Northern line at Clapham Common tube station, a 7 Minute stroll away. In the other direction, a 10 minute walk along vibrant, up-and-coming Acre Lane will bring you to the centre of Brixton, first stop on the Victoria Line, and everything the area has to offer, from the fantastic Brixton Village and Pop Brixton, to the Ritzy Cinema, to Brockwell Park and its 1930s Lido.

**Council tax band C**      **EPC rating E (52)**

## Features

- Four double bedroom
- Spacious reception
- Split level
- Modern
- Bright and airy throughout
- Close to transport links
- Close to high street amenities



Acre Lane, Brixton, SW2

Acre Lane, Brixton, SW2

4 Bedroom Flat

Approximate internal area: 1039 sqft 97 sqm



While we do try our very best, floor plans are produced as a guide only and we take no responsibility for the precise accuracy with which any property is represented.

Acre Lane, Brixton, SW2

