



Endymion Road, Brixton, SW2

2 bedroom flat - conversion for sale

£525,000

Share of Freehold

Property Details

A fantastic two double bedroom apartment just off vibrant Brixton Hill, a short walk to local shops, pubs, Brockwell Park and the wide array of amenities in Brixton and Herne Hill. This beautiful Victorian home has a private setting over the top floor, flooded with natural light and high ceilings enhancing the airy ambience. The heart of the home is the inviting reception room, packed full of character with high ceilings, sash windows with panelled under-features and modern flooring, combining to create the ideal space in which to relax in front of the original feature fireplace. The separate kitchen is a fresh and contemporary setting in which to cook and dine, with sleek white and steel cabinetry topped with wooden worktops for a softened industrial style. Both bedrooms are doubles, set apart for privacy. The principal has a feature fireplace and leafy views. Still a genuine double, the second bedroom has a handy mezzanine storage area. Completing this attractive home, the well-presented bathroom is equipped with a bathtub and boasts a stunning sash window.

Features

- Two double bedrooms
- Victorian conversion
- Bright and airy
- Characterful features
- Separate kitchen and reception
- Local pub, café and amenities on doorstep
- Brockwell Park a short stroll away
- Brixton and Herne Hill centres both within walking distance
- Share of freehold
- Chain-free

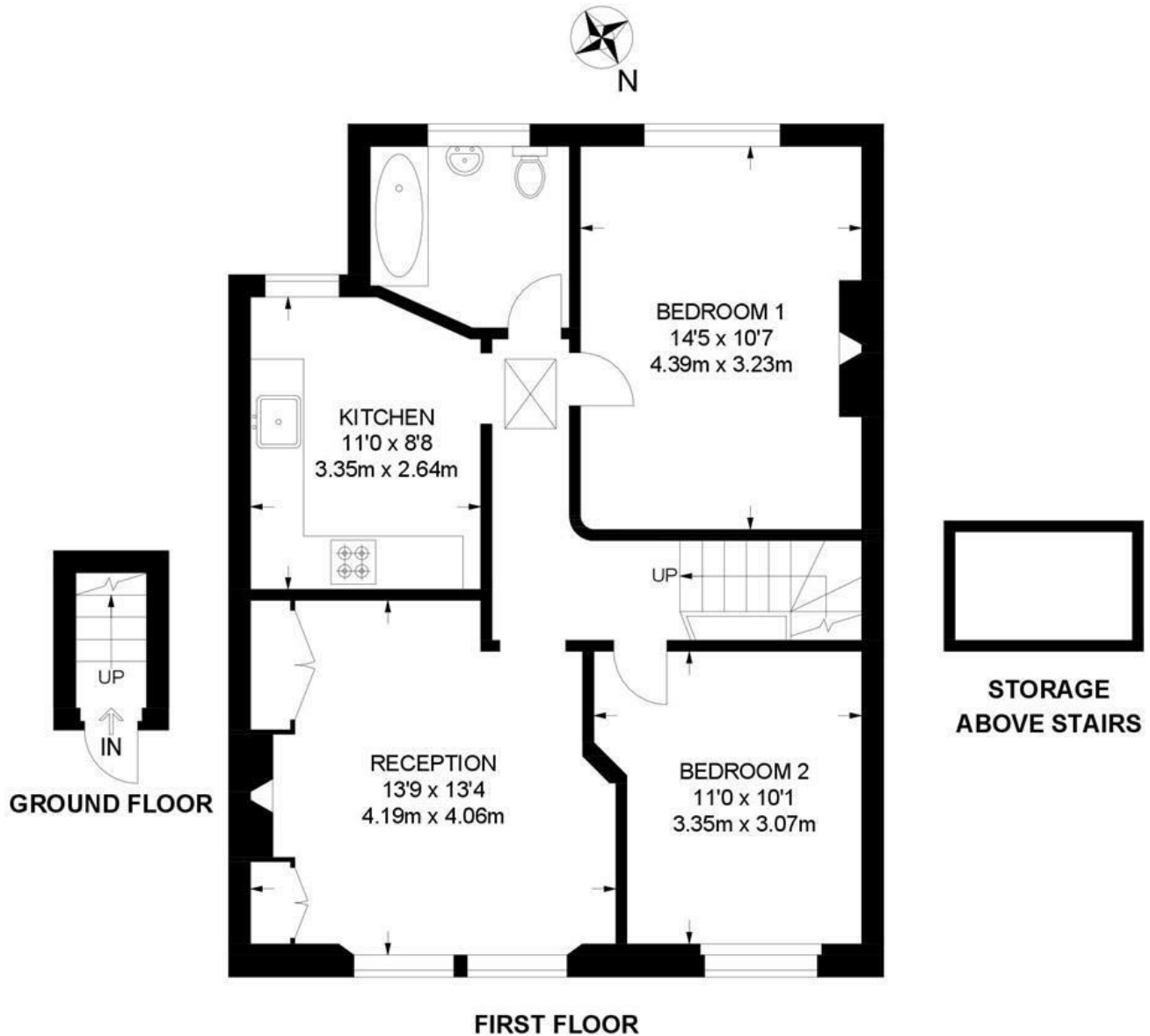
Council tax band EPC rating E (54)



Endymion Road, Brixton, SW2

Endymion Road, SW2
2 Bedroom Flat

APPROXIMATE GROSS INTERNAL AREA: **688 SQ FT / 63.9 SQ M**



While we try our very best, floor plans are produced as a guide only and we take no responsibility for the precise accuracy with which any property is represented.

Endymion Road, Brixton, SW2

