



Wingford Road, Brixton, SW2

4 bedroom house - terraced to let

£876 Per Week

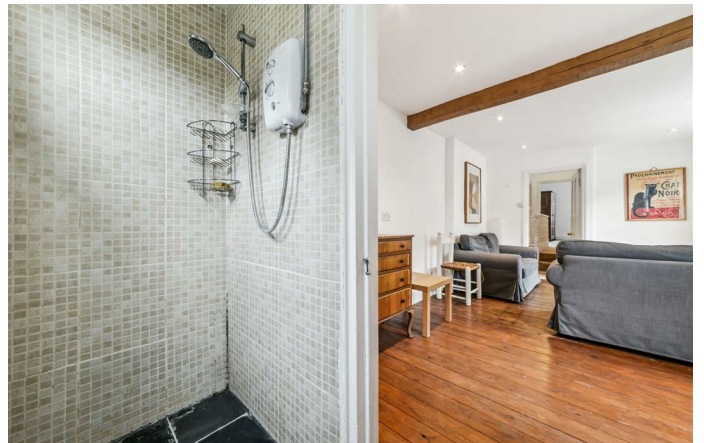
Furnished

Property Details

Features

- Four Bedroom
- Two bathrooms
- Terraced House
- Garden
- HMO
- Close to transport links

Council tax band E EPC rating D (56)



Wingford Road, Brixton, SW2

Wingford Road, SW2

4 bedroom house

APPROXIMATE GROSS INTERNAL AREA :

1203 SQ FT / 111.76 SQ M



GROUND FLOOR

FIRST FLOOR



While we try our very best, floor plans are produced as a guide only and we take no responsibility for the precise accuracy with which any property is represented.

Wingford Road, Brixton, SW2

